



open eir SB-WLR Fault Repair Performance in clock hours for QTR 3 2021

This presentation details the SB-WLR fault repair performance for eir for the period Jul to Sep 2021.

The charts below detail the performance of PSTN, SB-WLR and White label in clock hours.

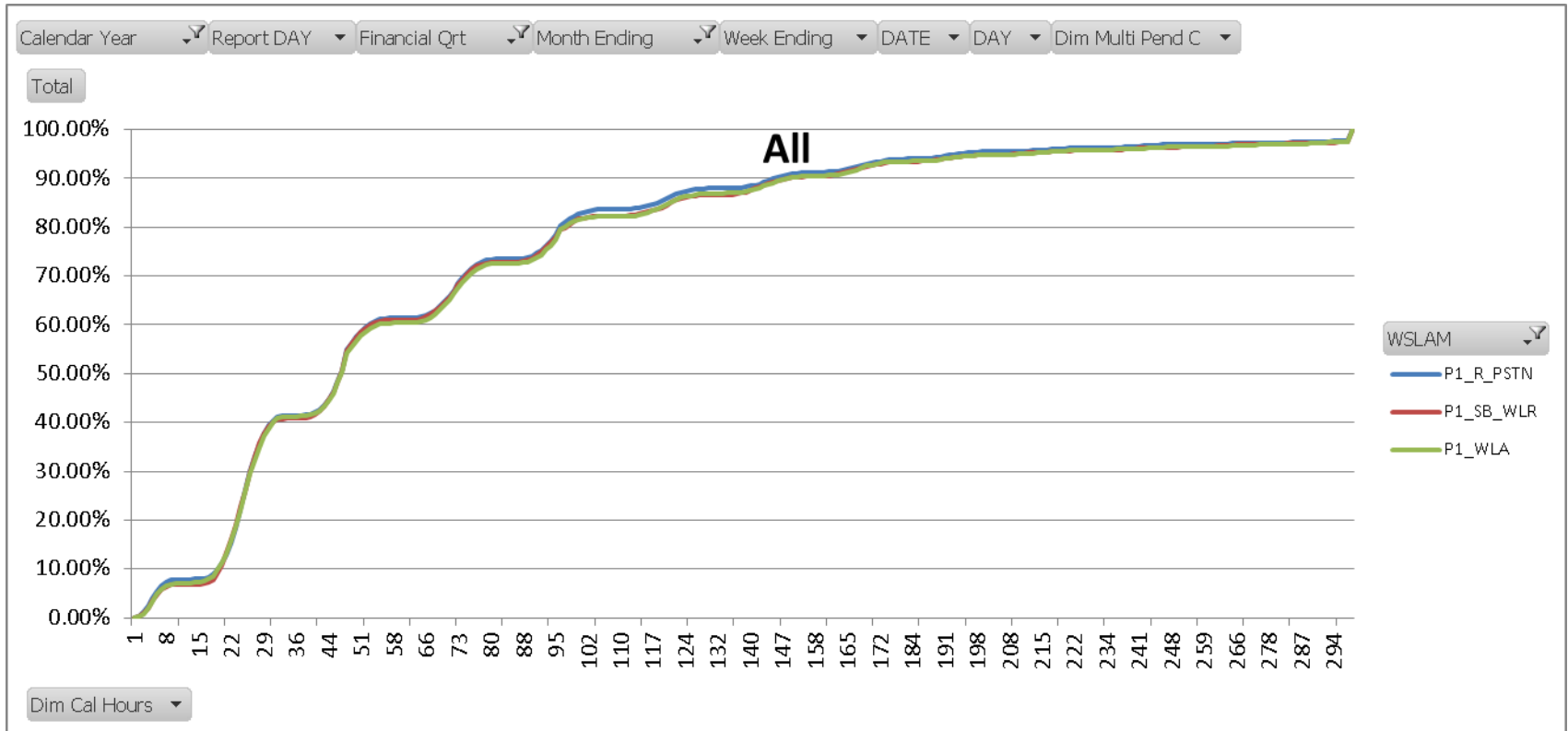
Fault Repair In Clock Hours Slides 4-11

Fault Repair In Clock Hours with Storm Days Removed Slides 12

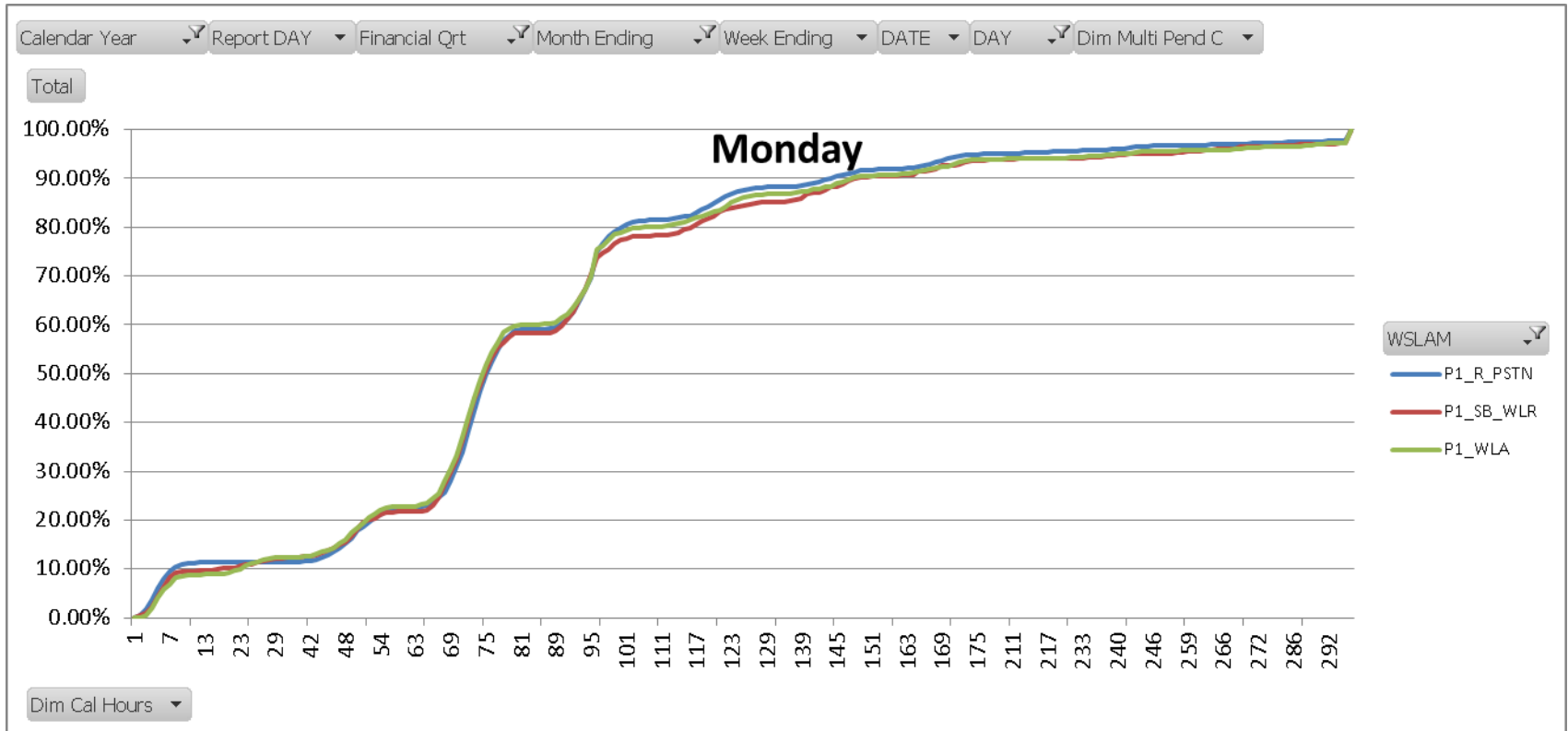
Pending Clear Removed Slides 13-21

Fault Repair In Clock Hours Pending Clear and Storm days Removed
Slides 22

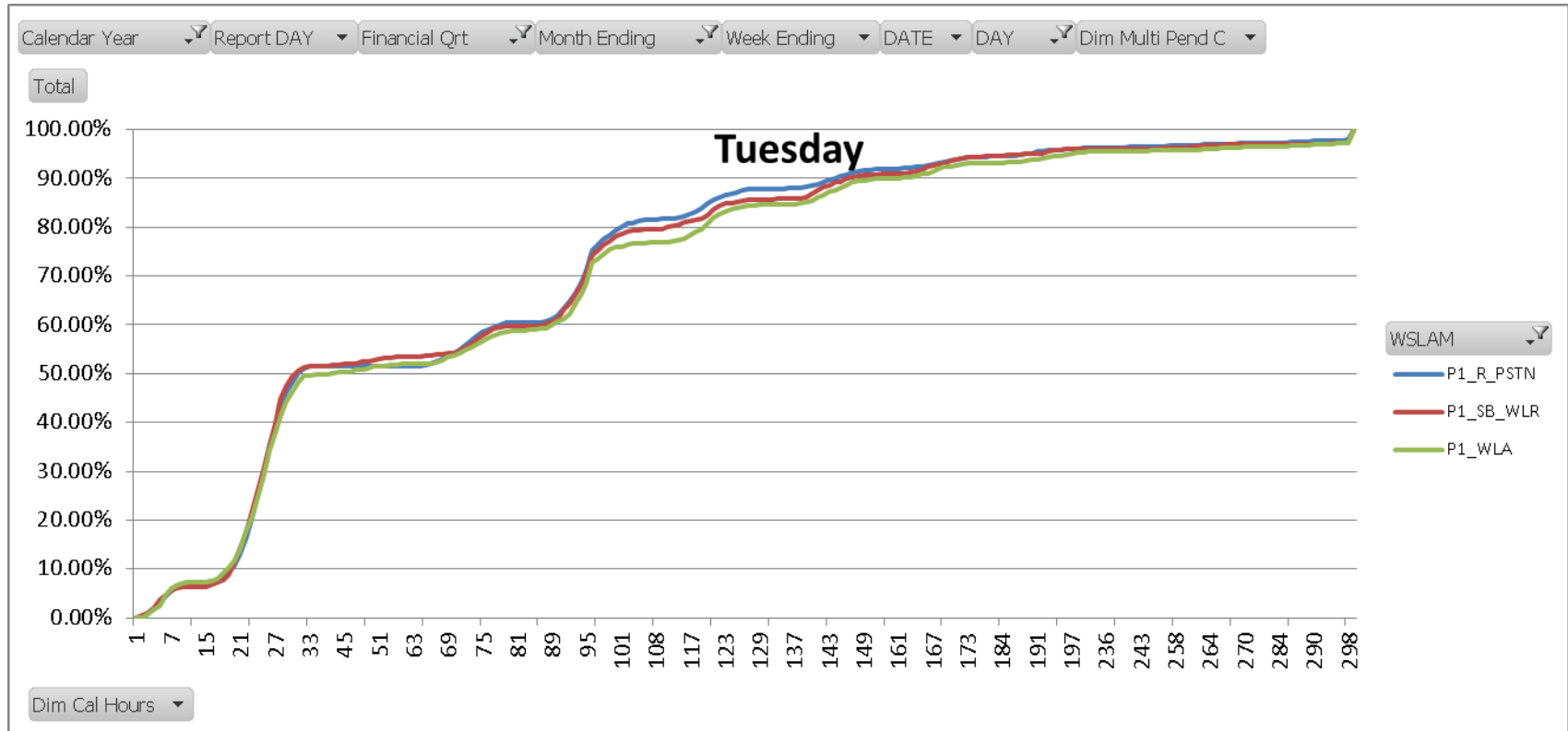
Fault Repair in Clock Hours



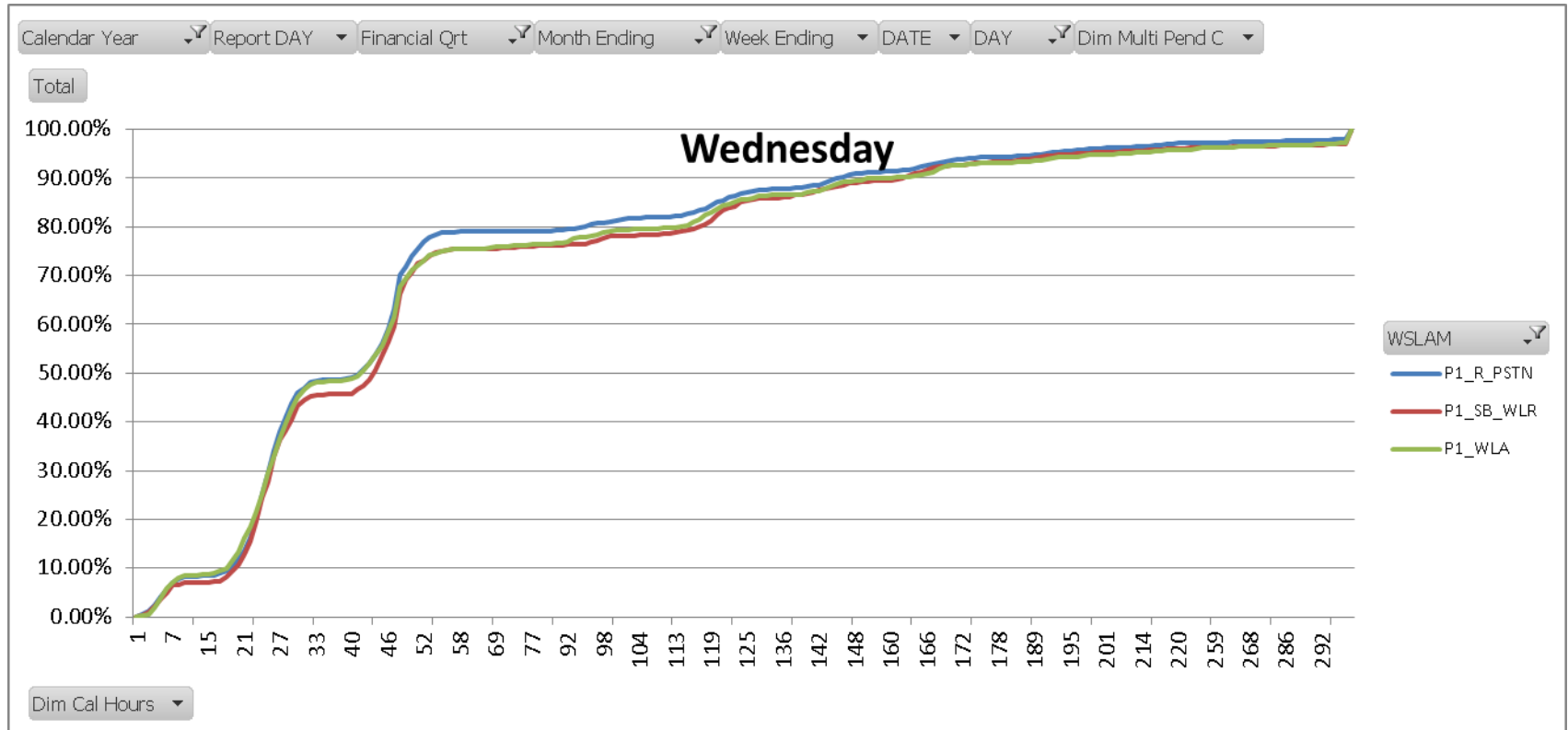
Fault Repair for Monday in Clock Hours



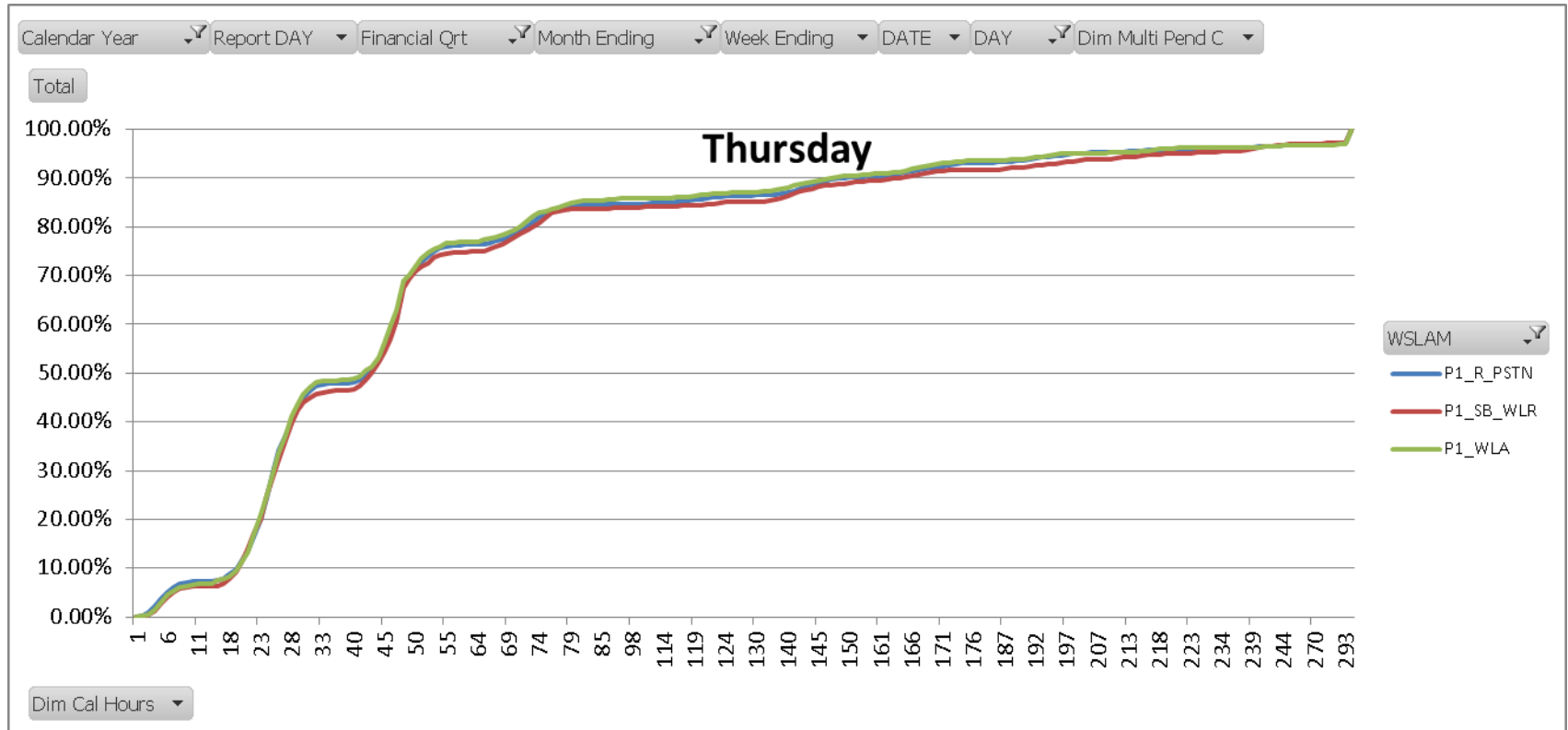
Fault Repair for Tuesday in Clock Hours



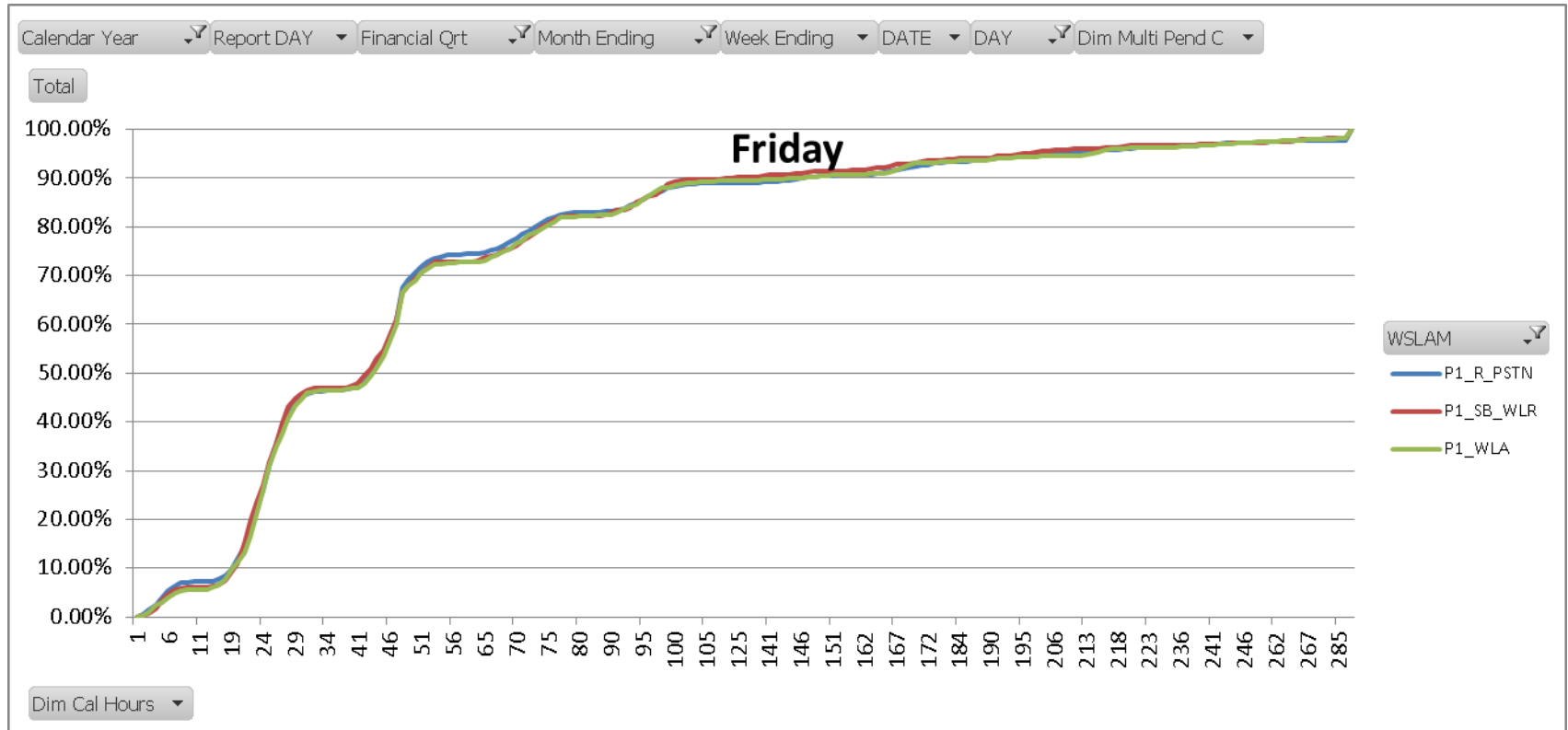
Fault Repair for Wednesday in Clock Hours



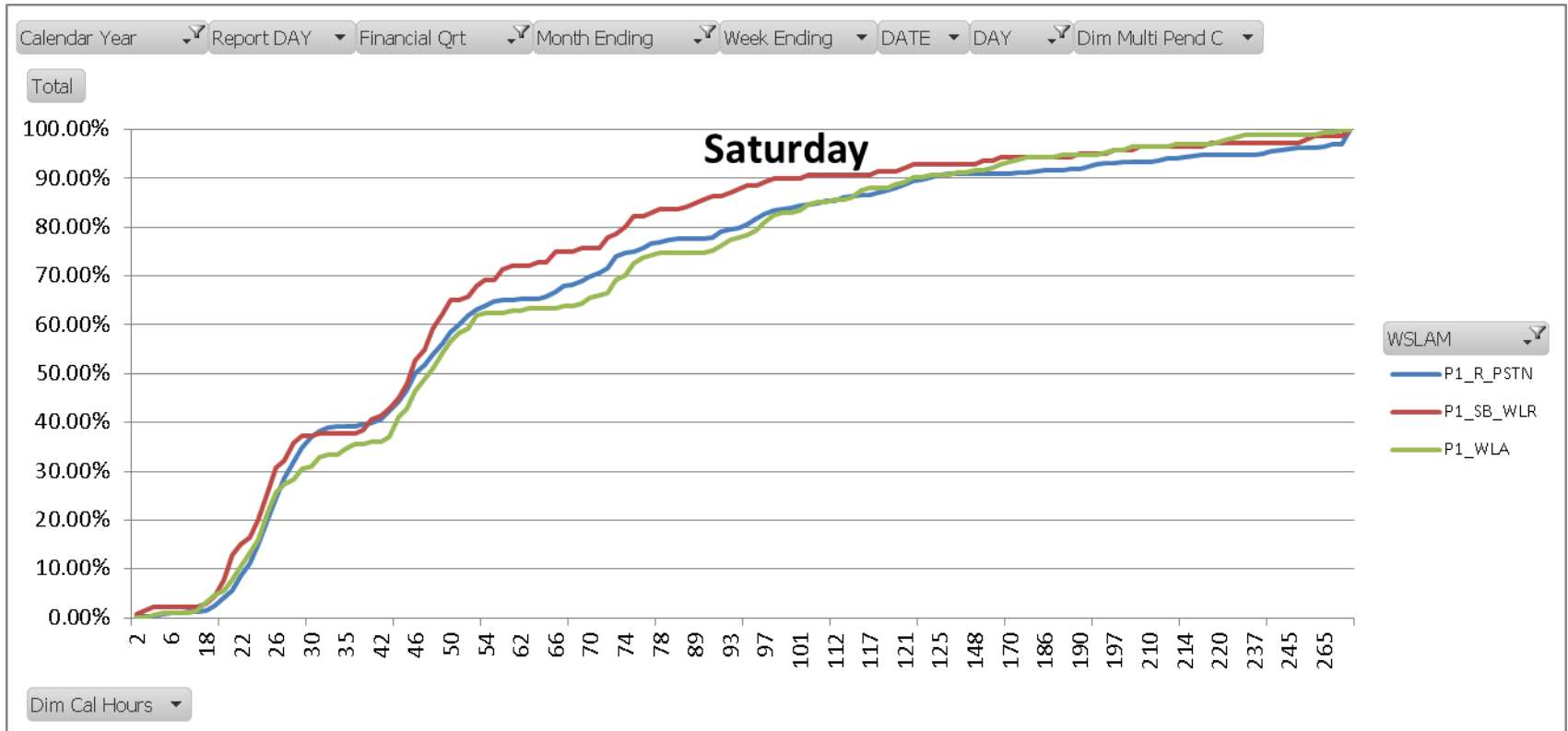
Fault Repair for Thursday in Clock Hours



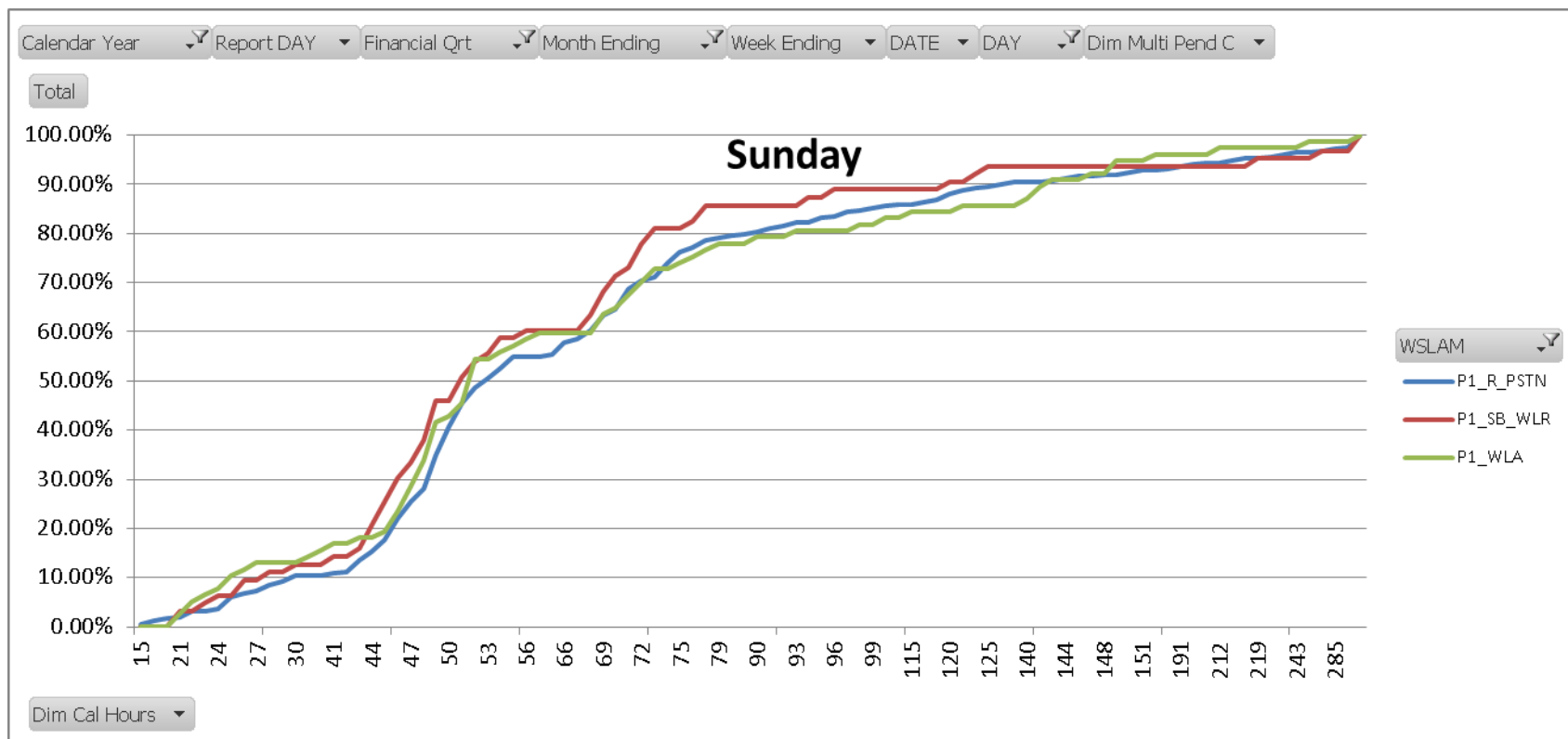
Fault Repair for Friday in Clock Hours



Fault Repair for Saturday in Clock Hours



Fault Repair for Sunday in Clock Hours



Storm Days Removed

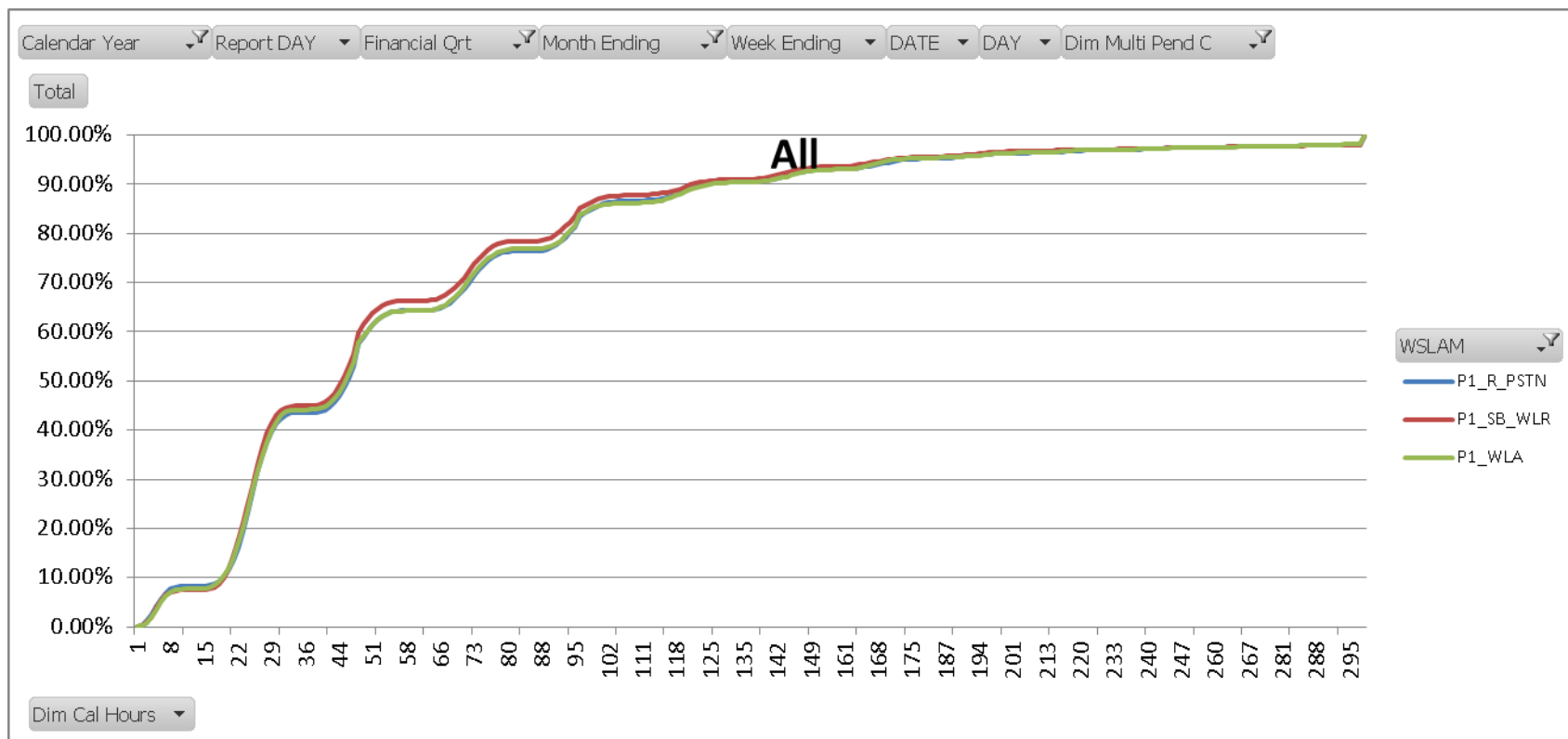


There were no Storm mode days declared at a national level (all exchanges) during the reporting period.

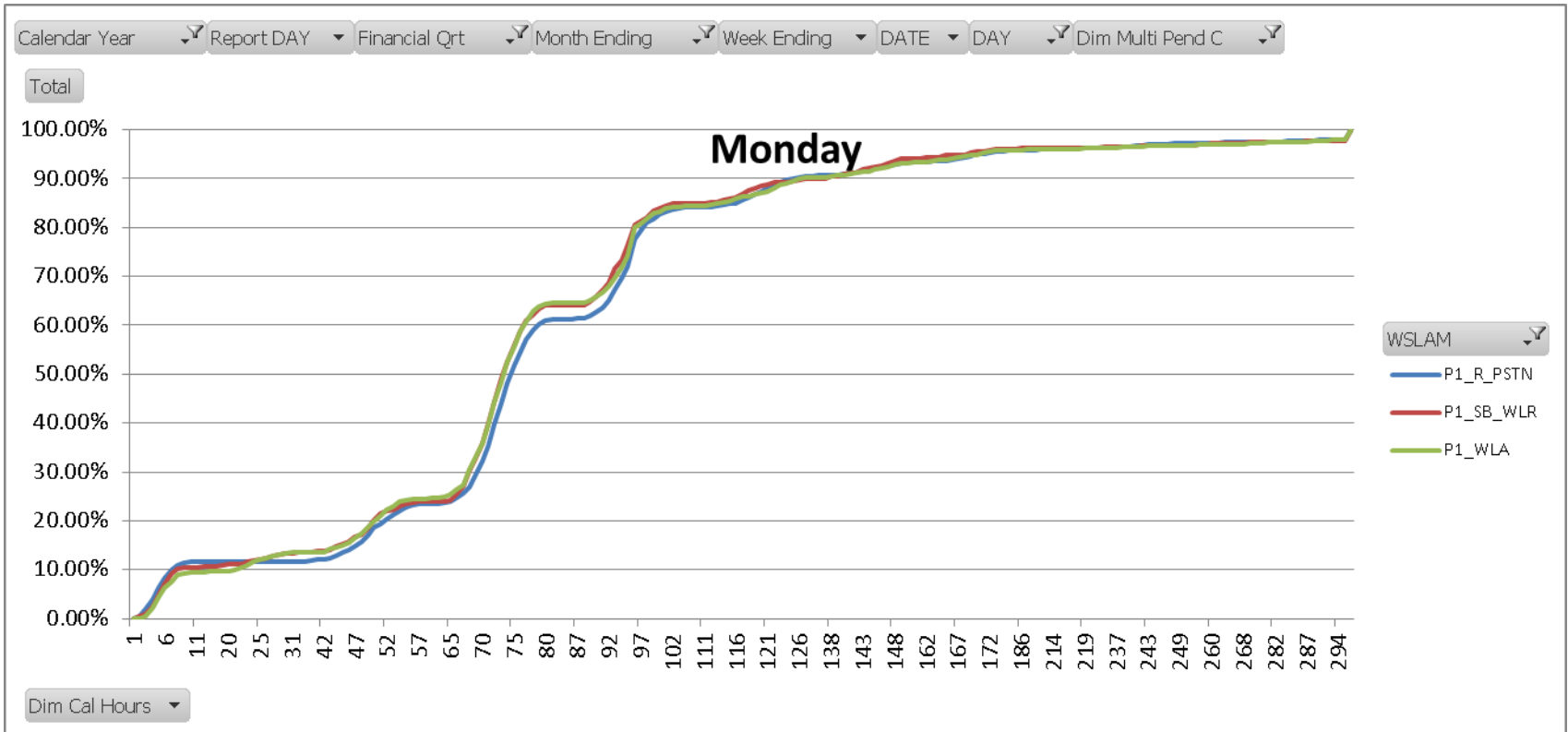
Multiple Pending Clears Removed



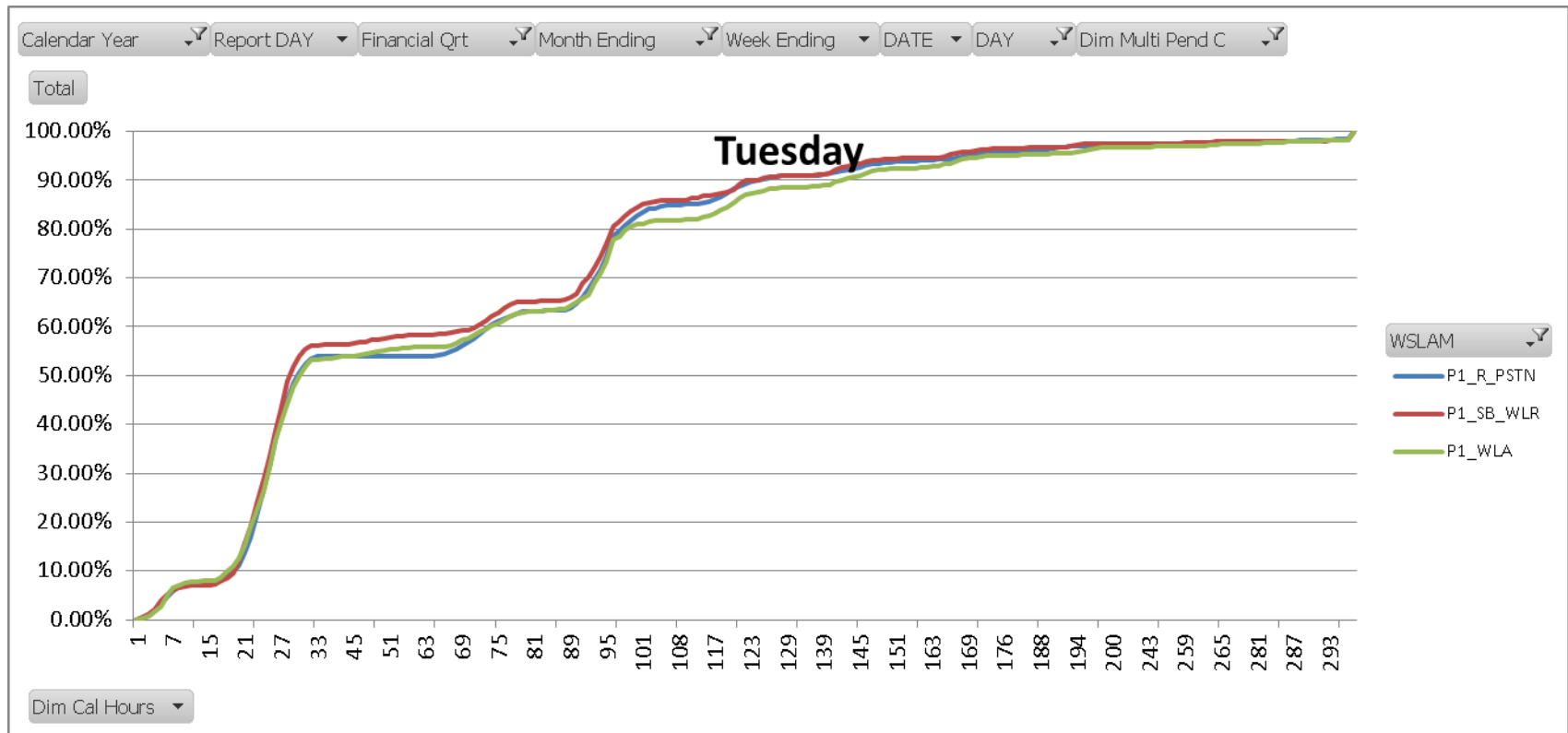
Fault Repair in Clock Hours Multiple Pending Clears Removed



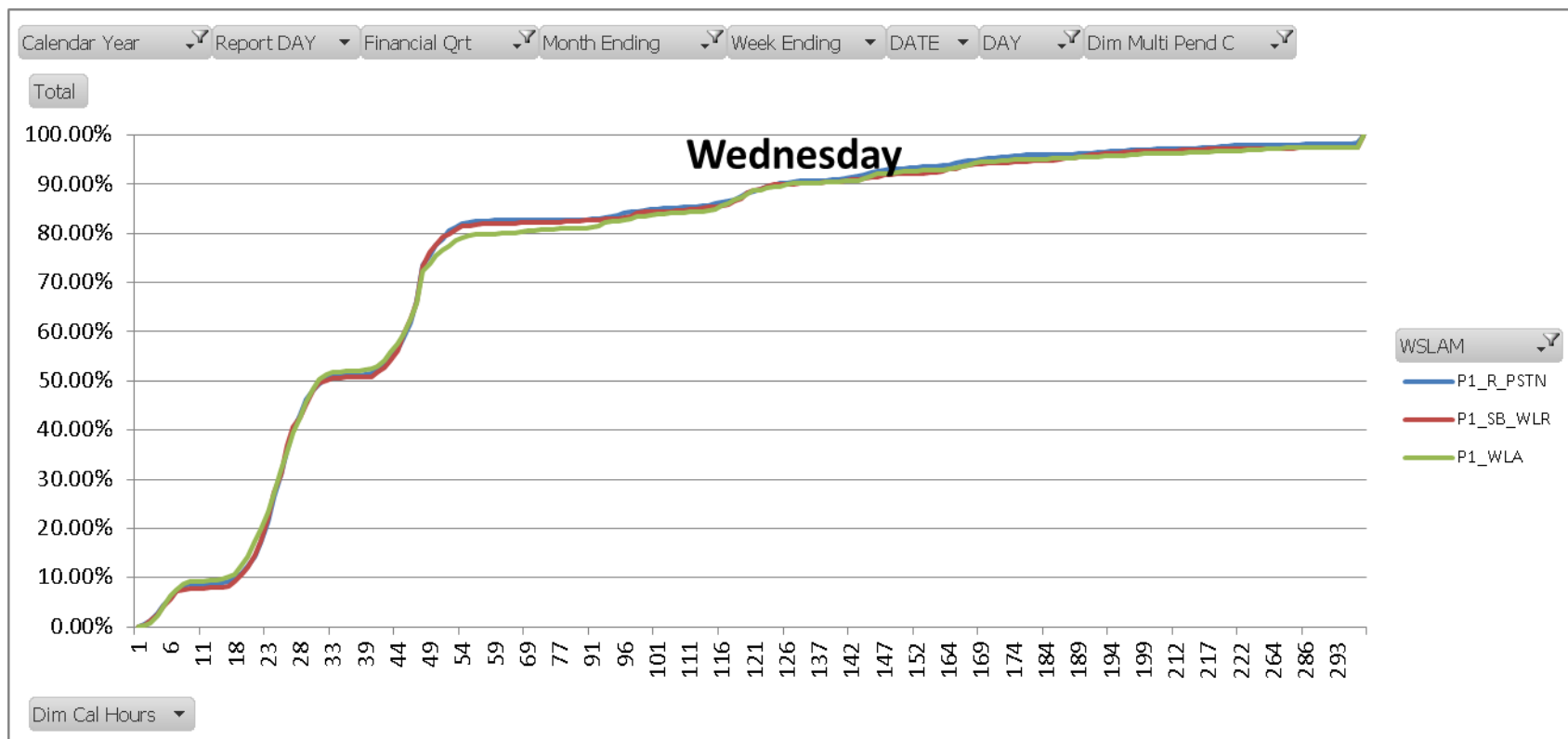
Fault Repair for Monday In Clock Hours Multiple Pending Clears Removed



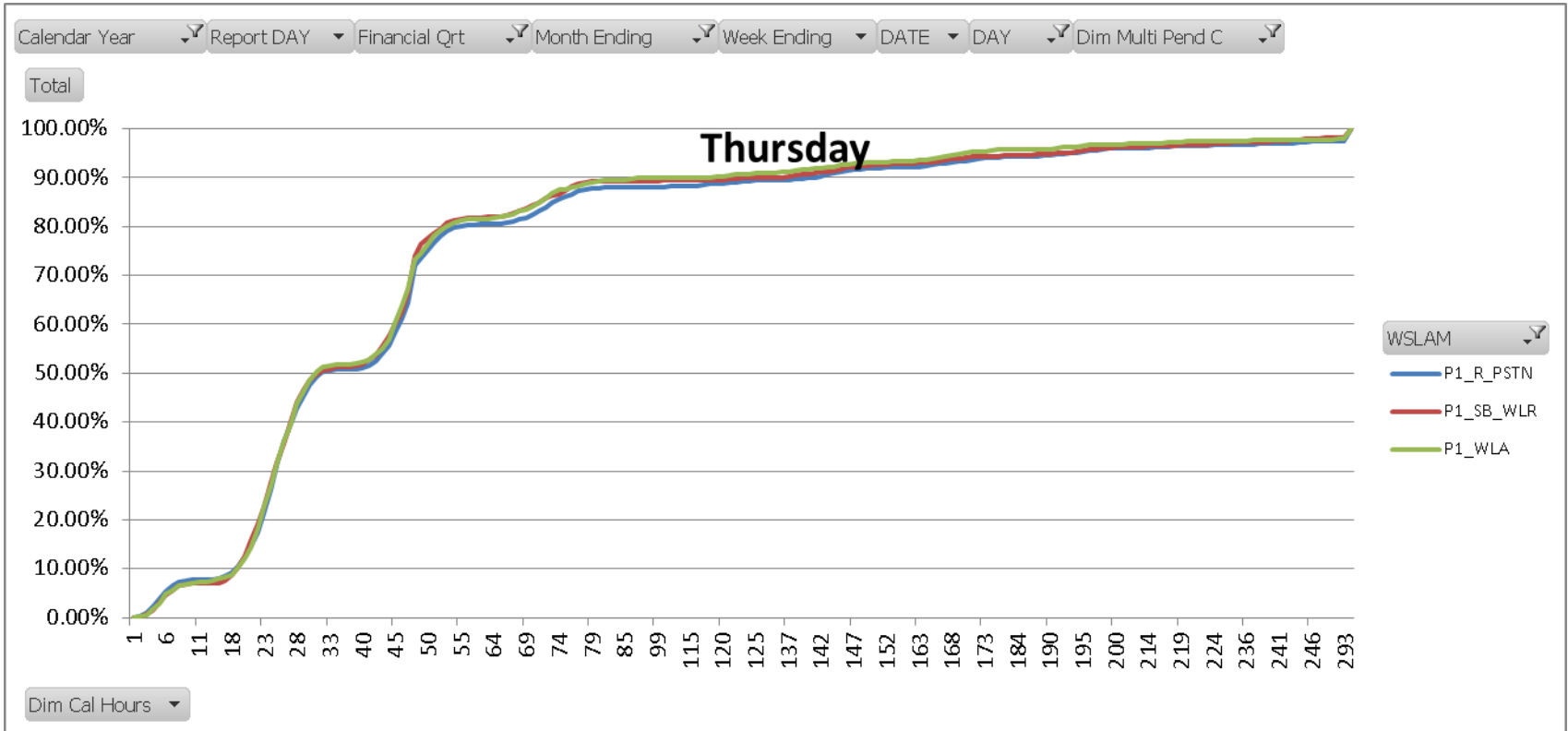
Fault Repair for Tuesday In Clock Hours Multiple Pending Clears Removed



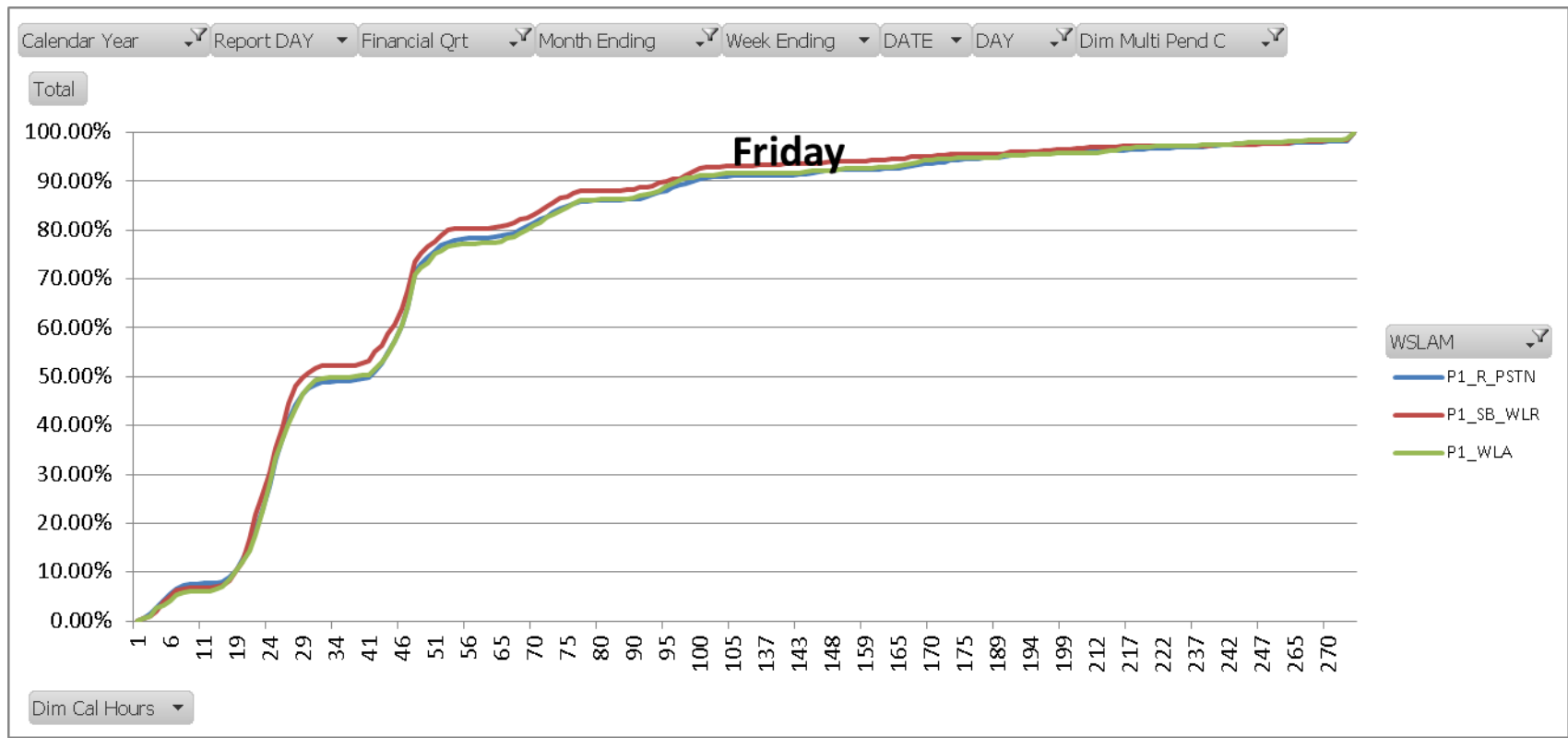
Fault Repair for Wednesday In Clock Hours Multiple Pending Clears Removed



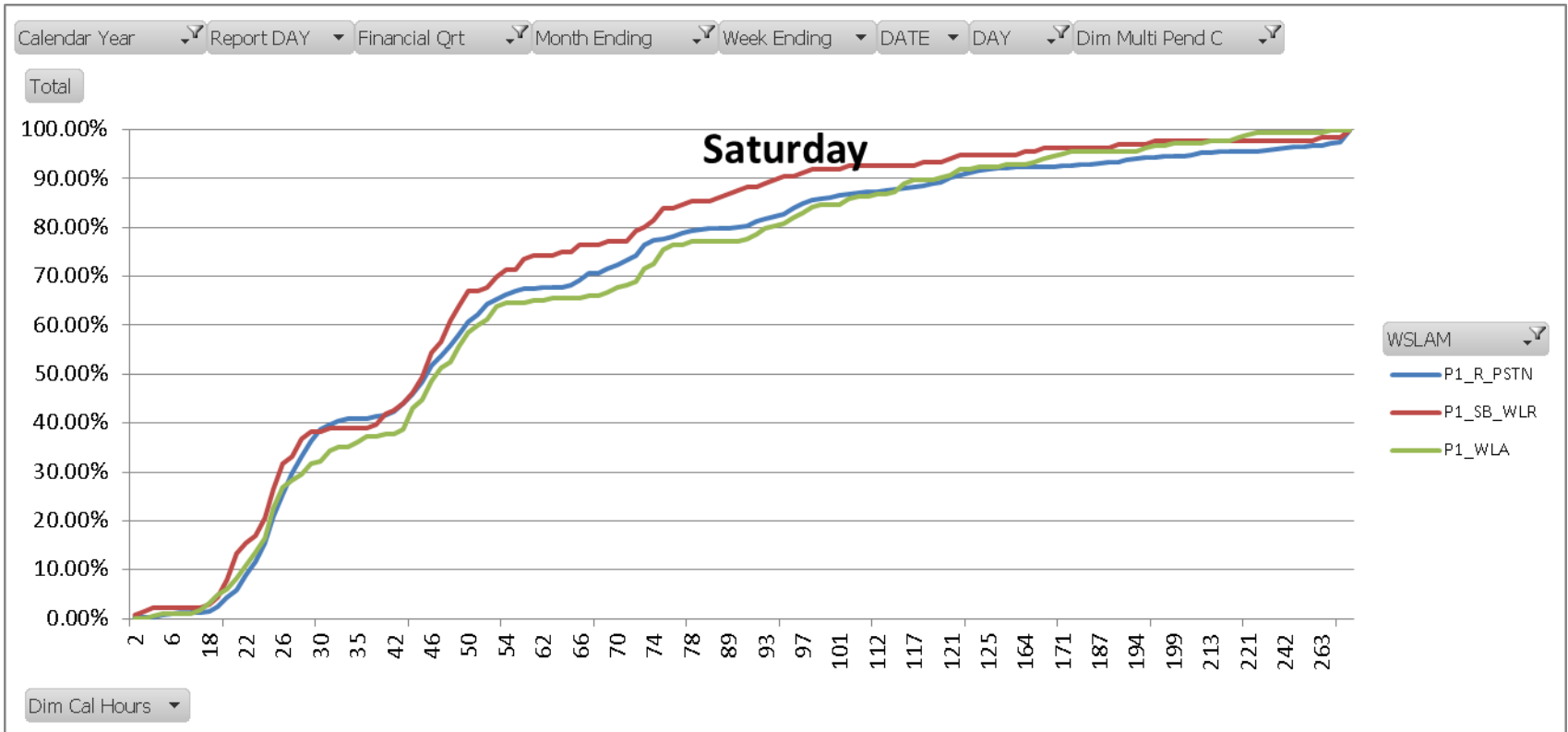
Fault Repair for Thursday In Clock Hours Multiple Pending Clears Removed



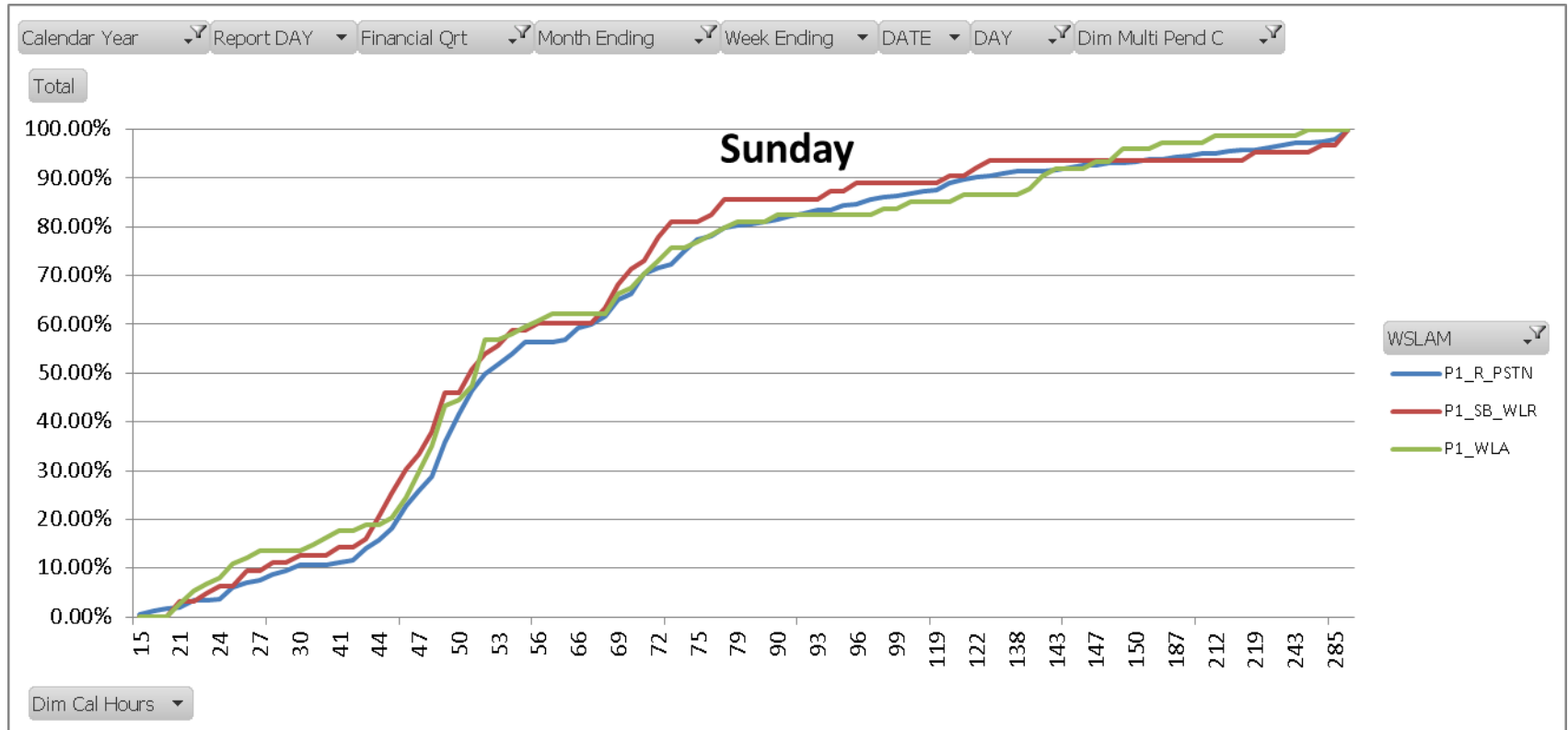
Fault Repair for Friday In Clock Hours Multiple Pending Clears Removed



Fault Repair for Saturday In Clock Hours Multiple Pending Clears Removed



Fault Repair for Sunday In Clock Hours Multiple Pending Clears Removed



There were no Storm mode days declared at a national level (all exchanges) during the reporting period.