



# open eir SB-WLR Fault Repair Performance in clock hours for QTR 1 2020

---

This presentation details the SB-WLR fault repair performance for eir for the period JAN to MAR 2020.

The charts below detail the performance of PSTN, SB-WLR and White label in clock hours.

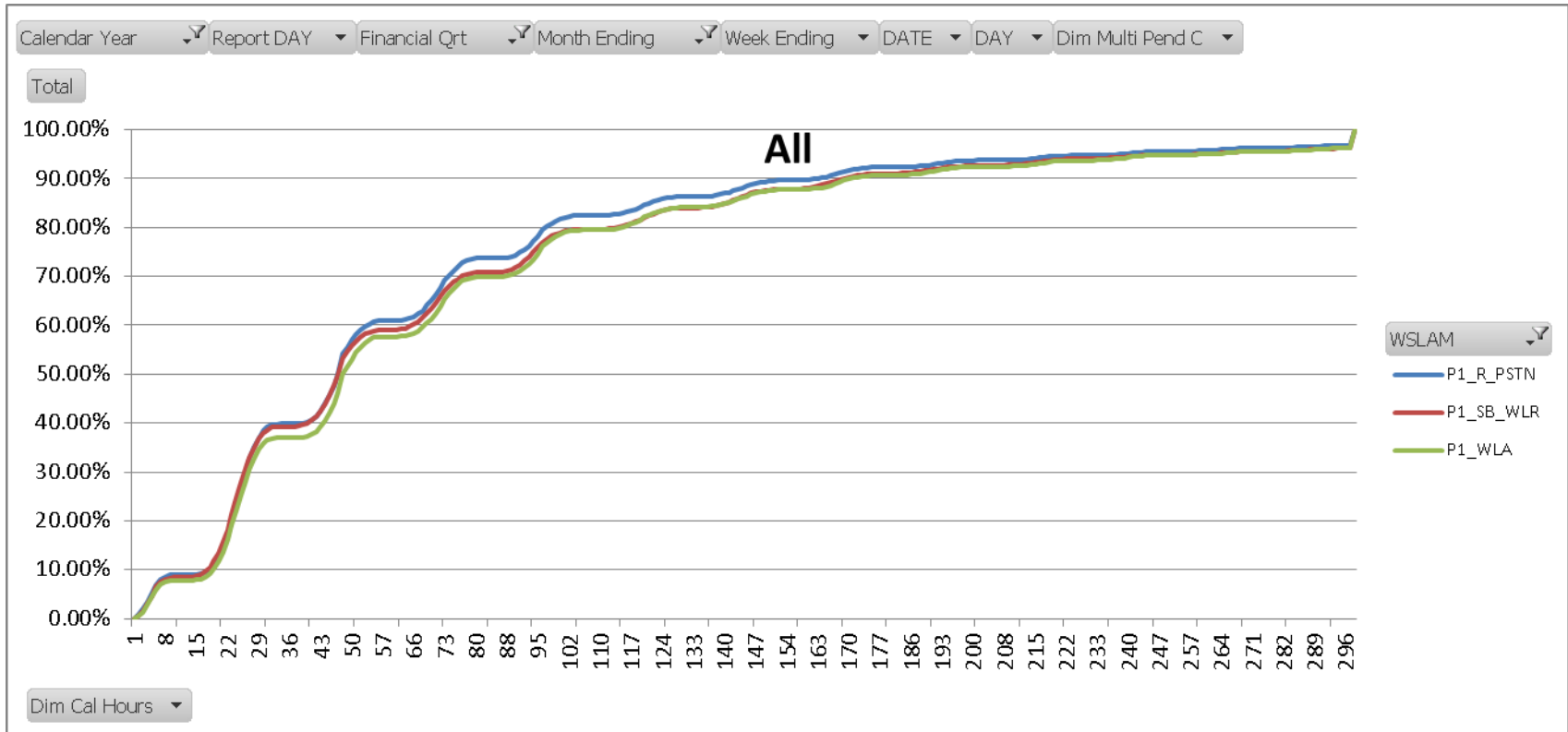
Fault Repair In Clock Hours Slides 4-11

Fault Repair In Clock Hours with Storm Days Removed Slides 12

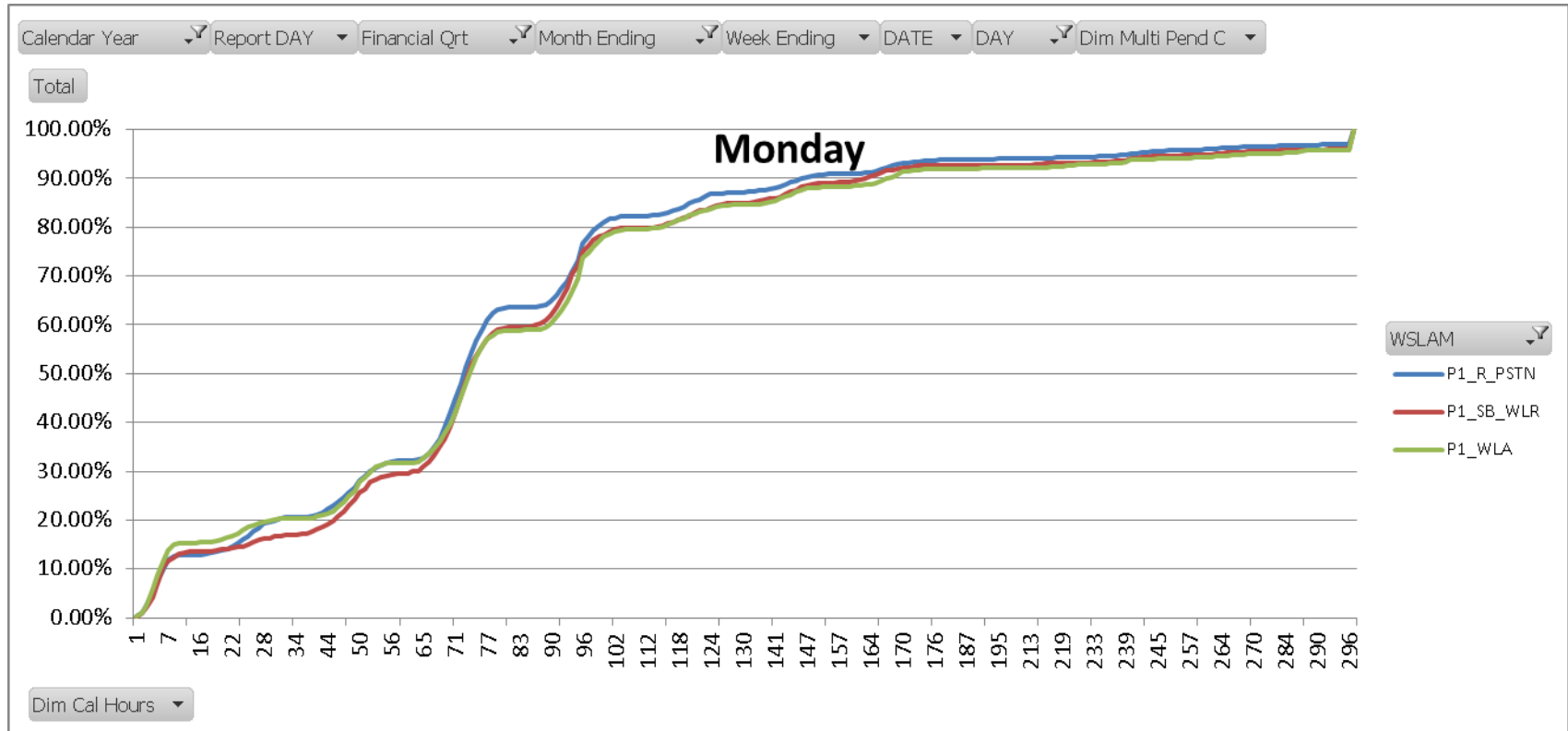
Pending Clear Removed Slides 13-21

Fault Repair In Clock Hours Pending Clear and Storm days Removed  
Slides 22

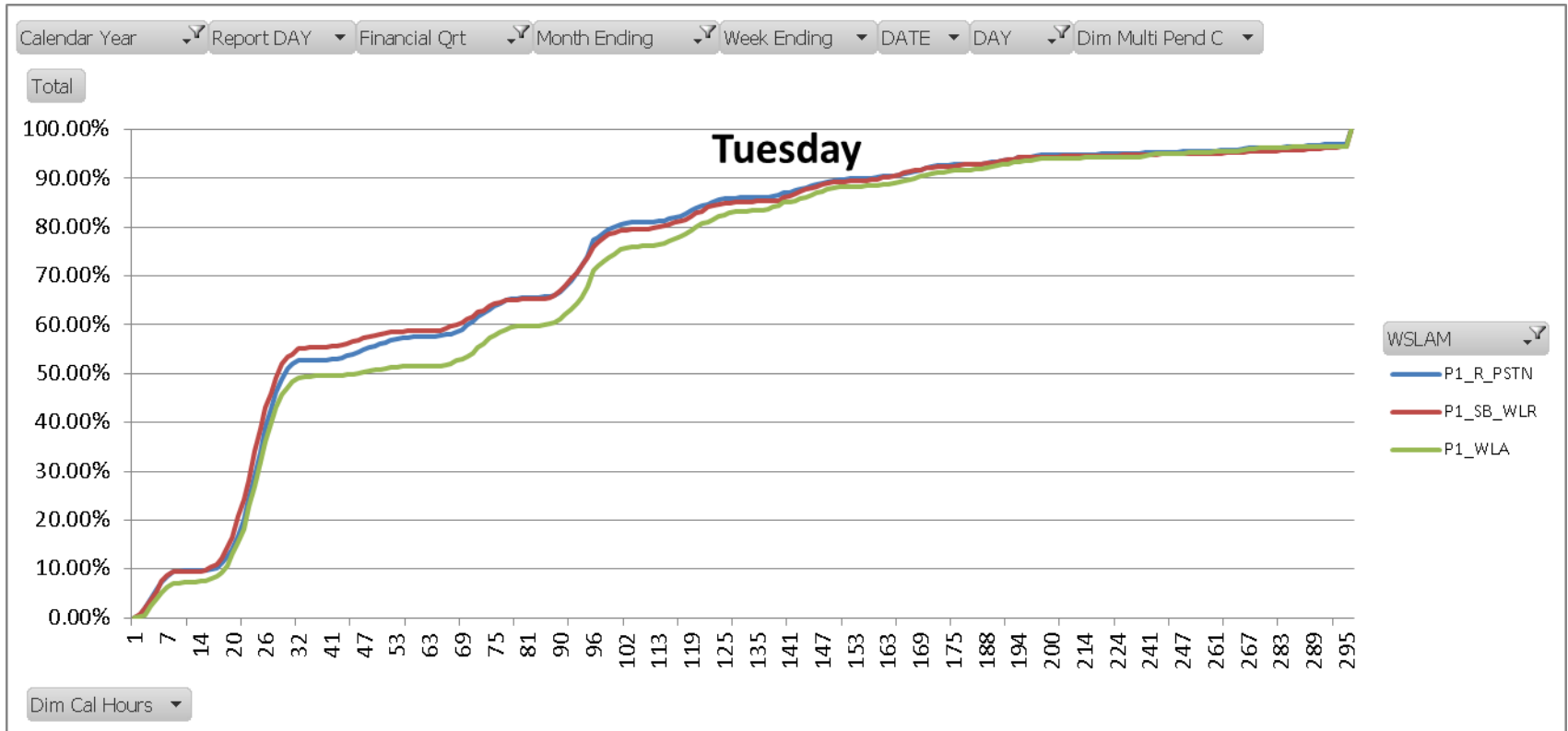
# Fault Repair in Clock Hours



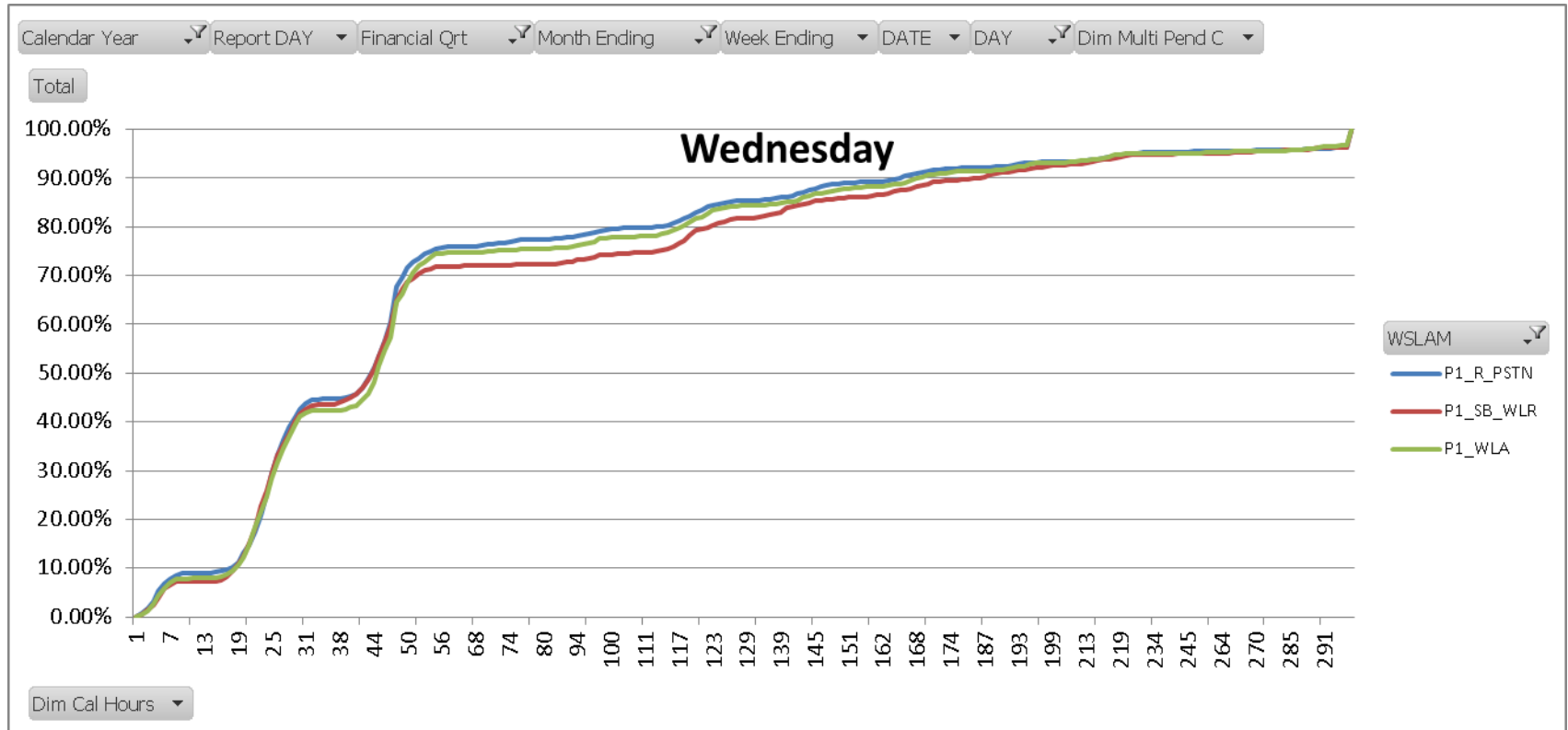
# Fault Repair for Monday in Clock Hours



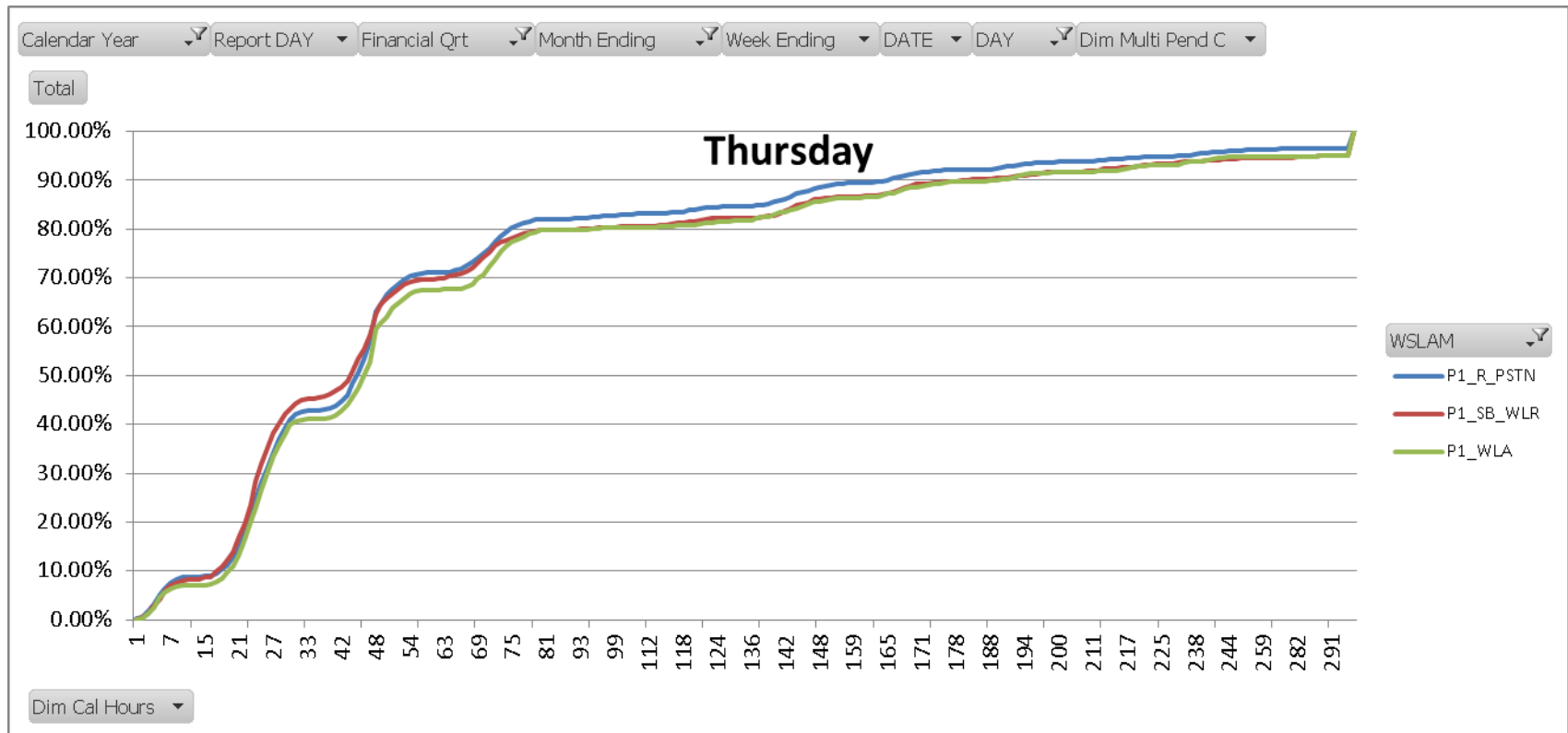
# Fault Repair for Tuesday in Clock Hours



# Fault Repair for Wednesday in Clock Hours

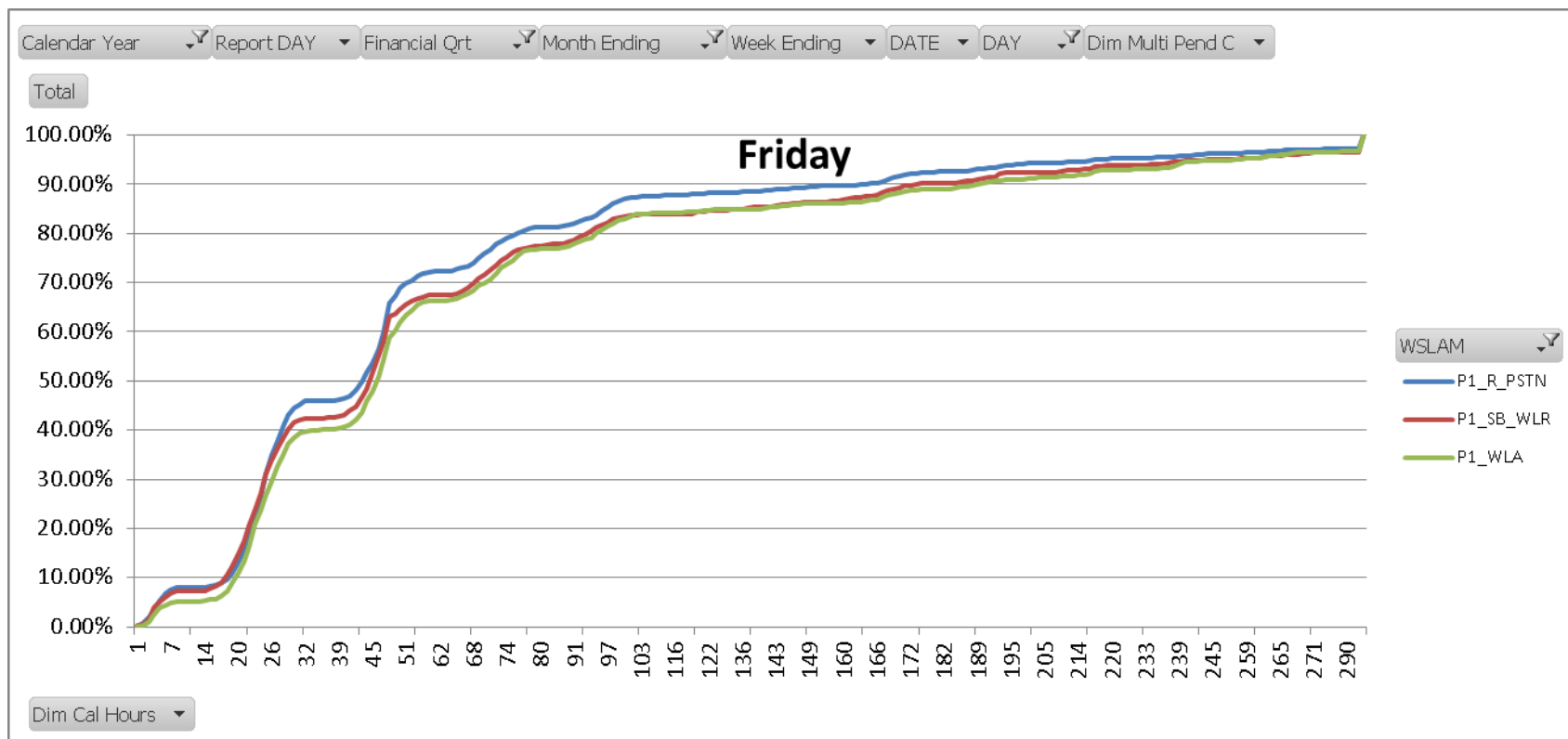


# Fault Repair for Thursday in Clock Hours

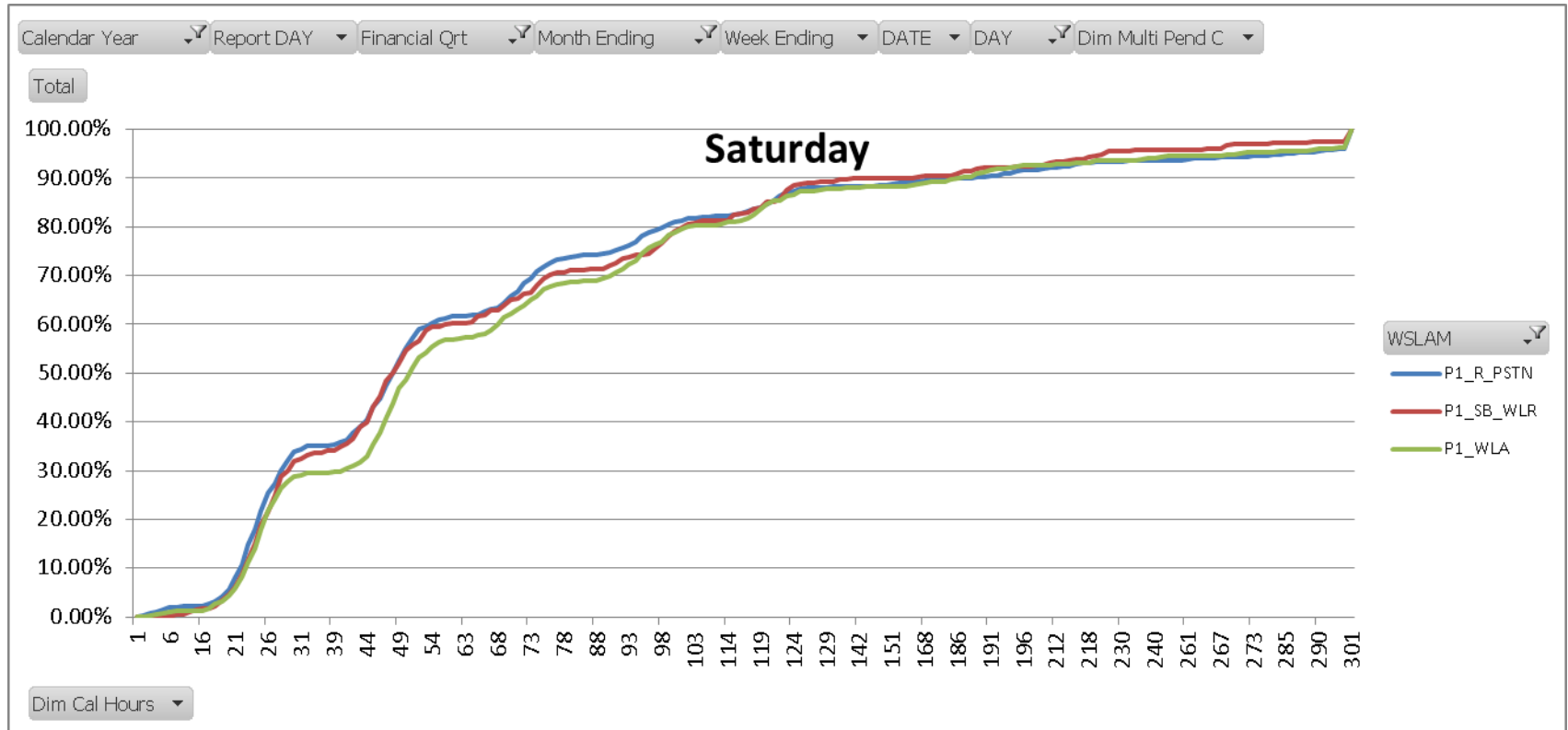




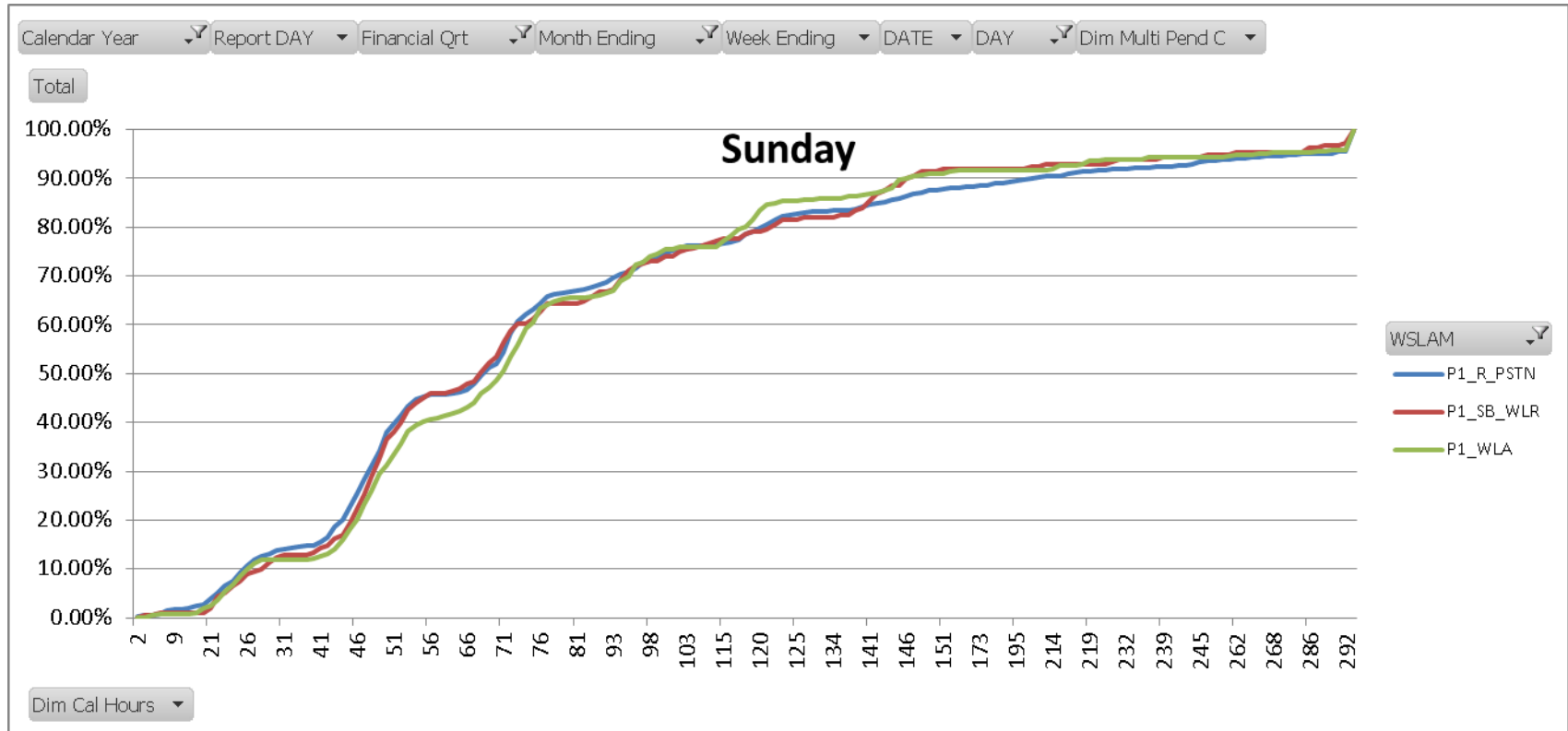
# Fault Repair for Friday in Clock Hours



# Fault Repair for Saturday in Clock Hours



# Fault Repair for Sunday in Clock Hours



# Storm Days Removed

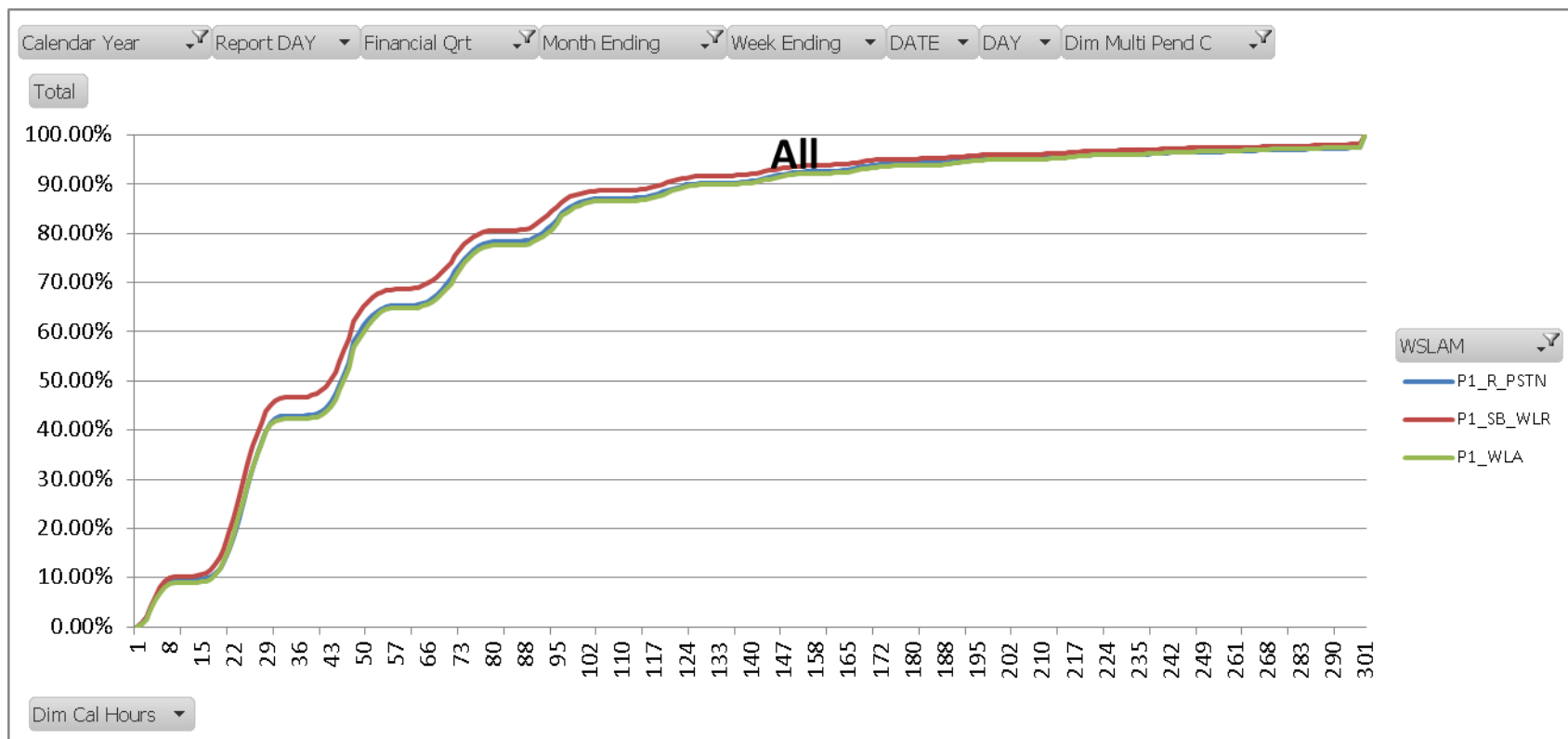


There were no Storm mode days declared at a national level (all exchanges) during the reporting period.

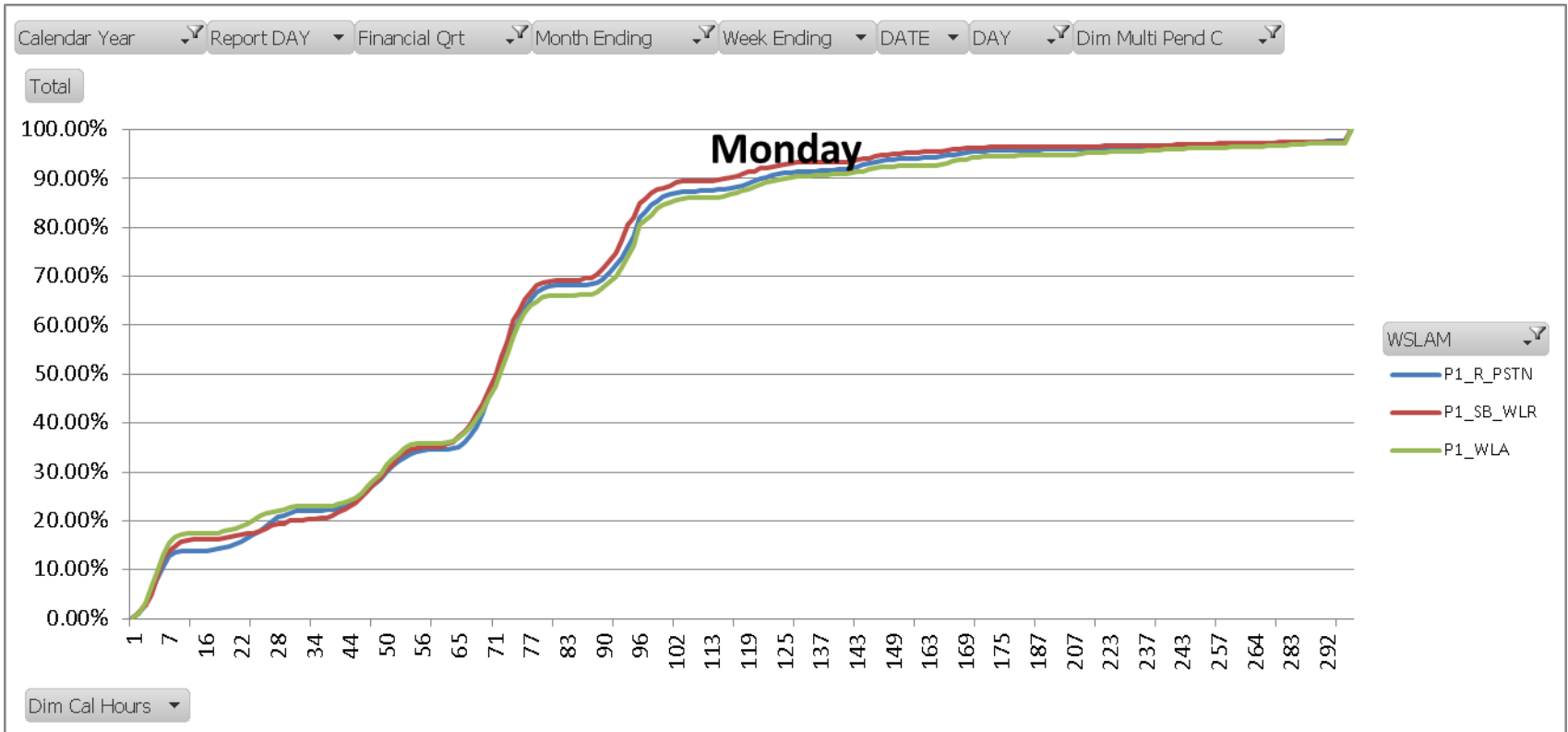
# Multiple Pending Clears Removed



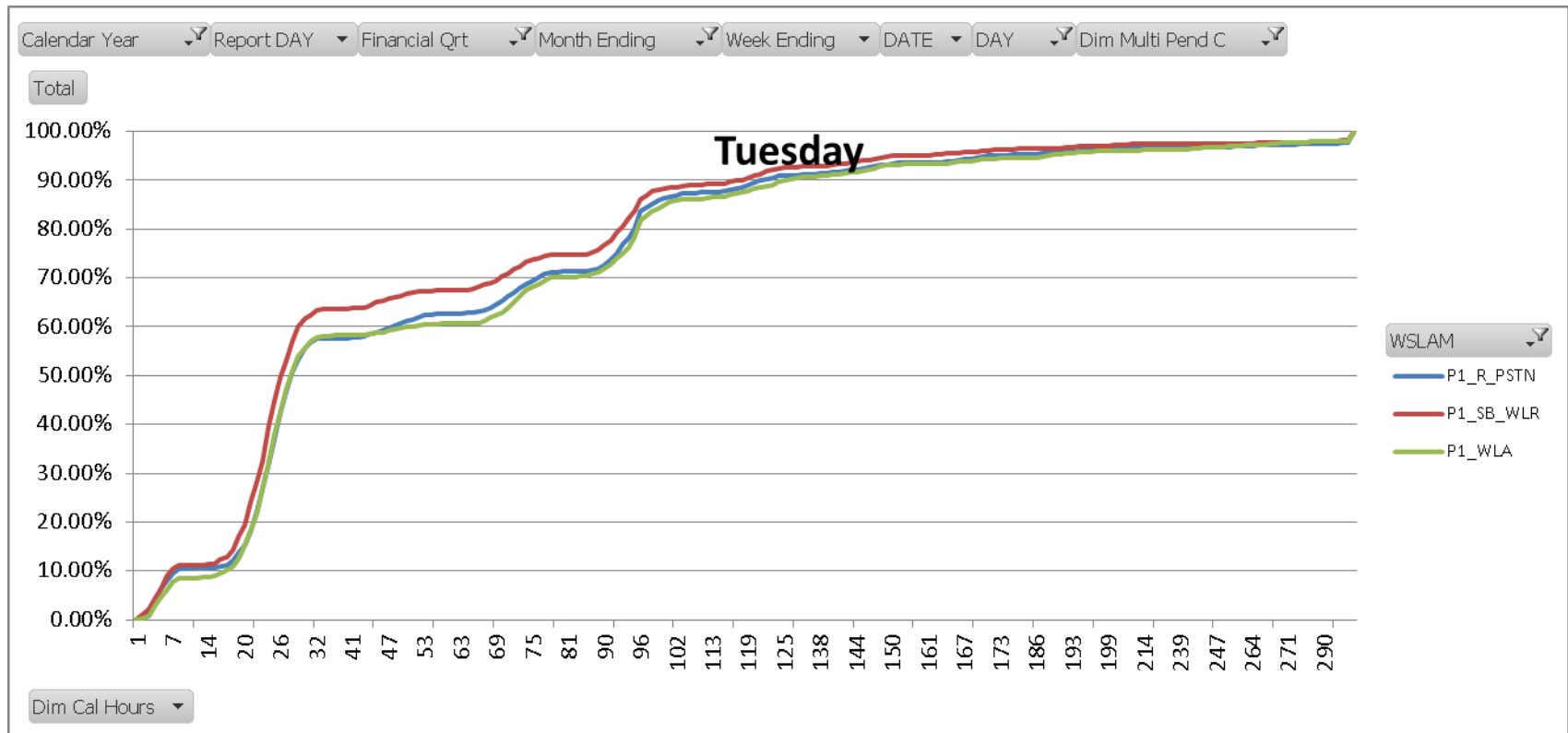
# Fault Repair in Clock Hours Multiple Pending Clears Removed



# Fault Repair for Monday In Clock Hours Multiple Pending Clears Removed

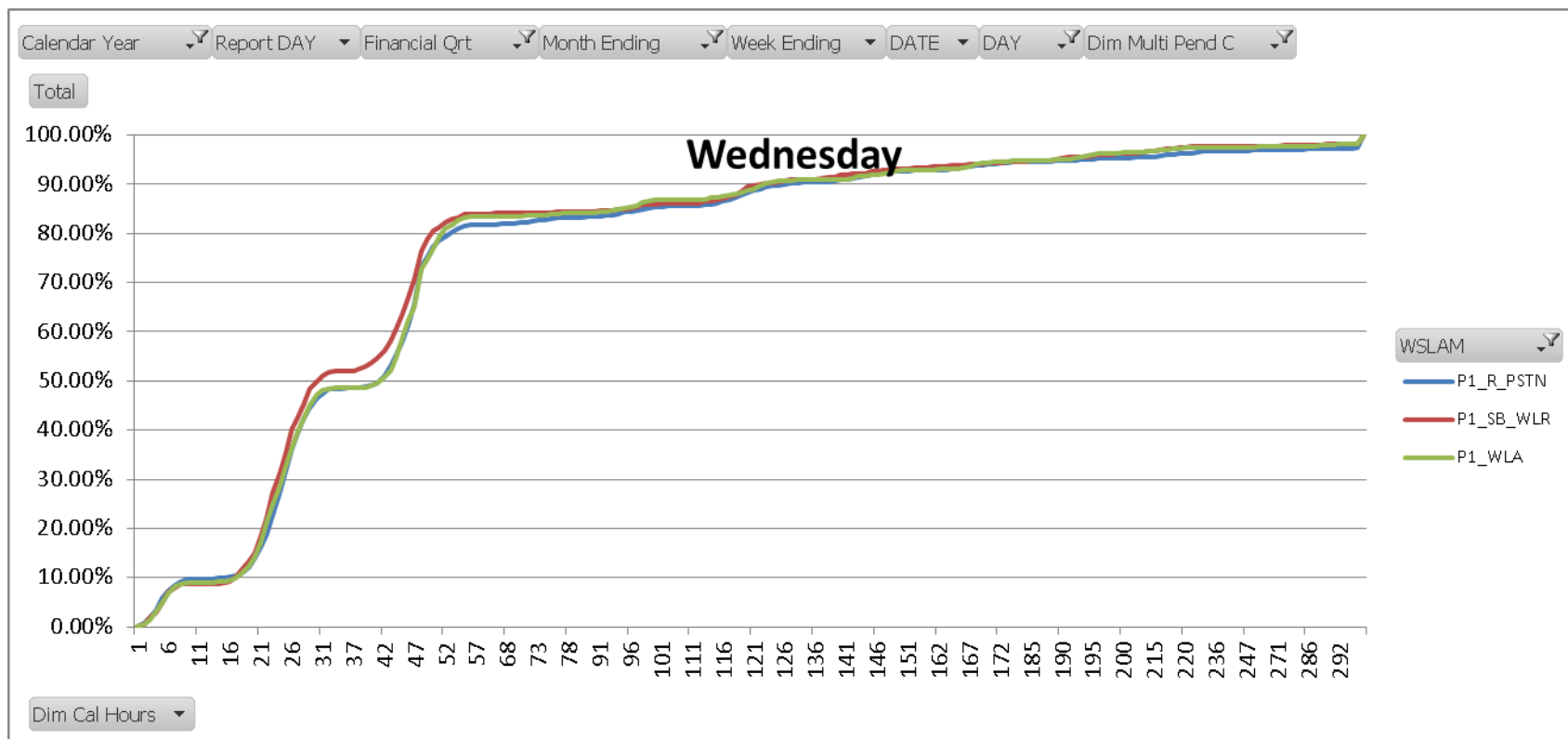


# Fault Repair for Tuesday In Clock Hours Multiple Pending Clears Removed

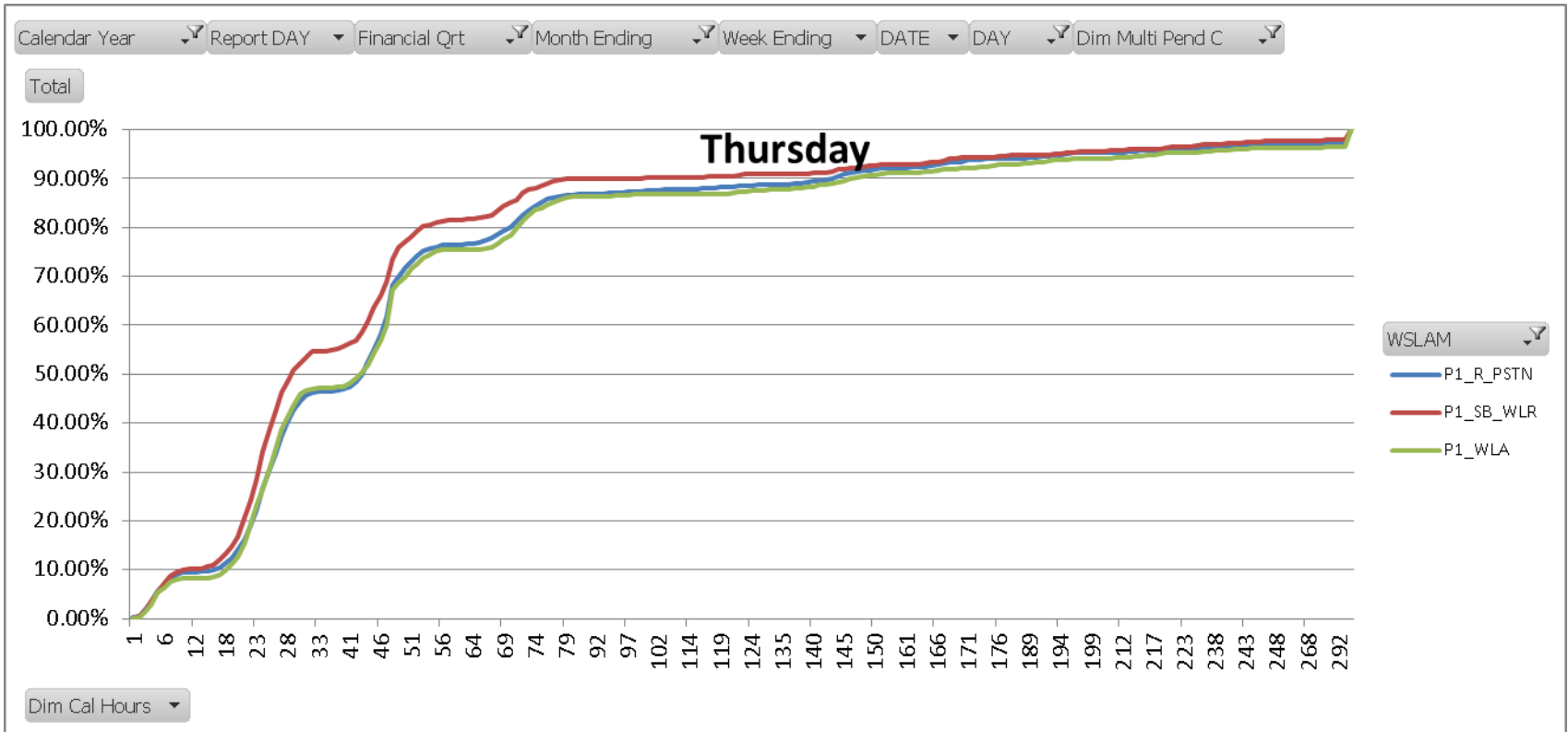




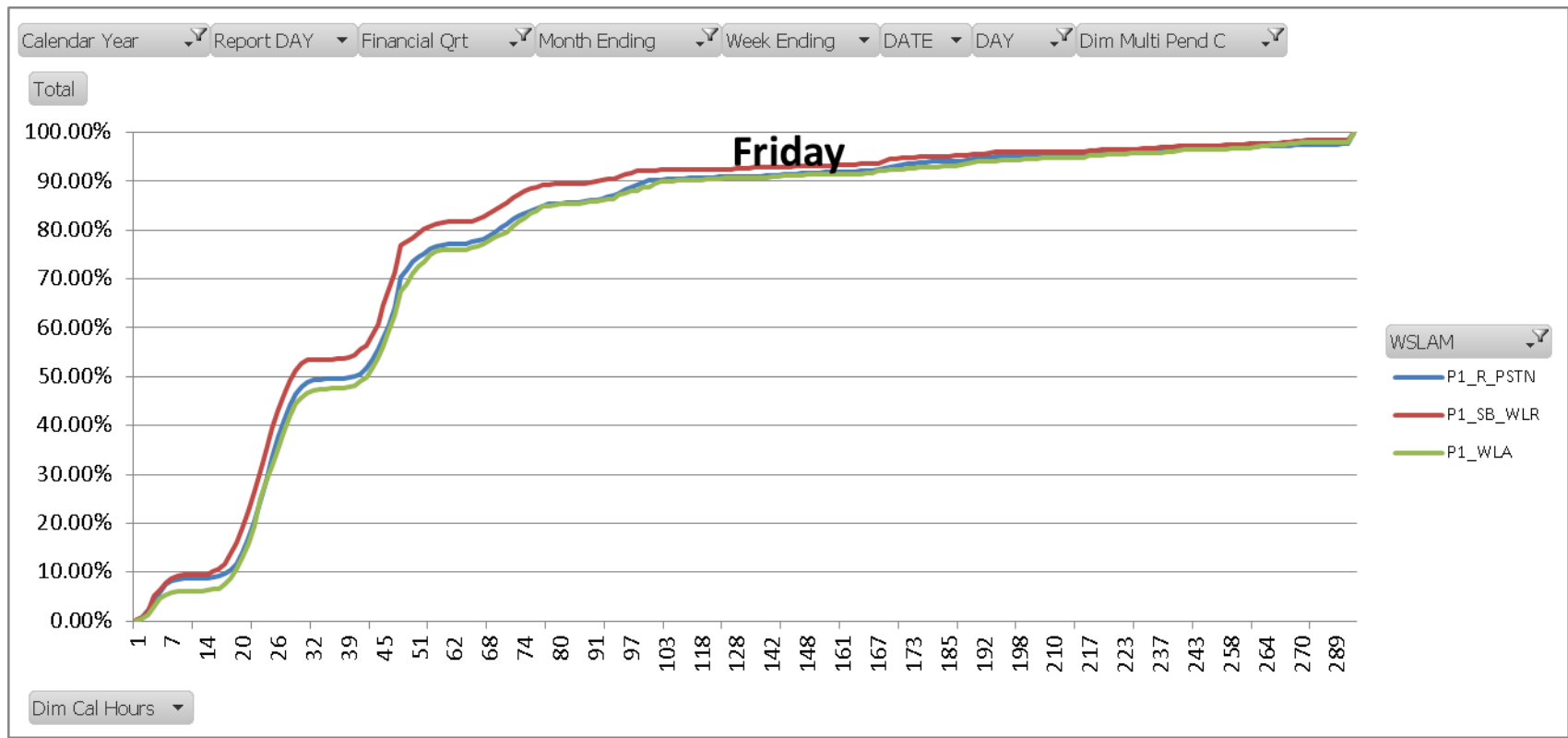
# Fault Repair for Wednesday In Clock Hours Multiple Pending Clears Removed



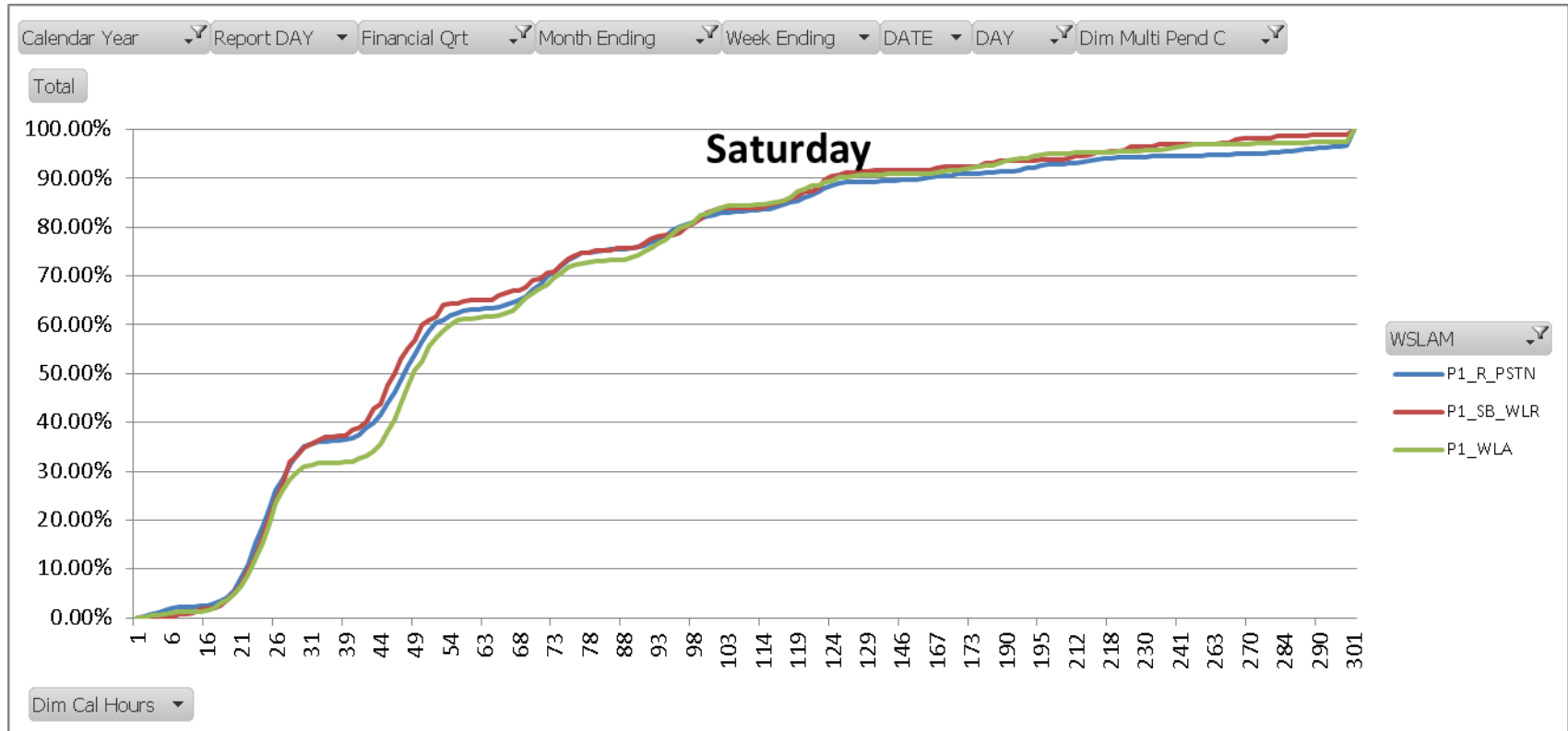
# Fault Repair for Thursday In Clock Hours Multiple Pending Clears Removed



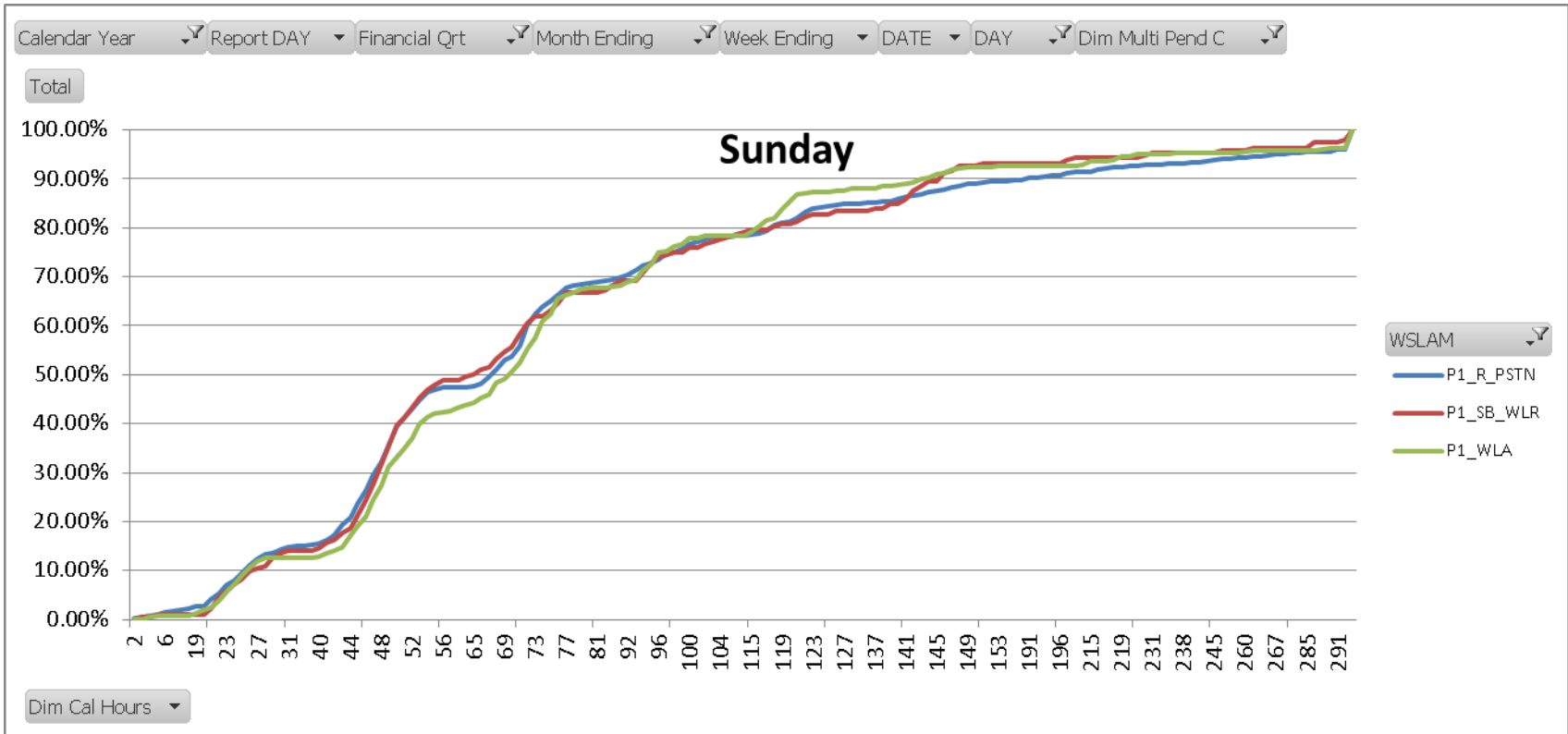
# Fault Repair for Friday In Clock Hours Multiple Pending Clears Removed



# Fault Repair for Saturday In Clock Hours Multiple Pending Clears Removed



# Fault Repair for Sunday In Clock Hours Multiple Pending Clears Removed



There were no Storm mode days declared at a national level (all exchanges) during the reporting period.